

Carestream

DR-FIT X-ray System

Versatile. Scaleable. Accurate.

The Perfect Fit Between Flexibility and Performance.



SMART IMAGING SOLUTIONS



Versatility Meets Value.

Many facilities, maybe yours, would like to step up to the benefits of a full X-ray suite with advanced features. And of course, you'd also want the versatility, functionality and quality that you can rely on through the years and growth of your facility. But perhaps you've been waiting for the right fit.

Now it's here. The CARESTREAM DR-FIT X-ray System is your way forward to a successful future. It has just the right selection of features and options to take your workflow to a new level of efficiency – by meeting your most pressing needs now, and providing a clear expansion pathway as your needs evolve.

Whatever your needs, the DR-FIT System will keep you headed towards superb performance and a solution that will grow along with you.

Advantages at a Glance

- Exceptional image quality to support accurate diagnoses.
- Scalable and upgradeable technology to help eliminate obsolescence.
- Wide selection of components to configure the ideal system for your needs.
- Advanced Smart Features to automate tasks and workflow steps that streamline processes, support radiographer productivity, save time and enhance patient care.

We Listened to Your Needs – and Responded.

When our customers speak, we listen. So when we heard customers around the world say they needed a fully featured room that's both versatile and scaleable, we got to work.

The DR-FIT is the result.



Everybody benefits from the advanced features the DR-FIT has to offer.



Patient

- DR technology helps to speed exams and aids in faster diagnoses.



Radiographer

- The system is easy to use.
- Choose optional features to improve and enhance workflow.



Radiologist

- Exceptional image quality supports accurate diagnoses.
- Configure the system to meet your facility's needs.



Rad Admin

- Return on investment – get a fully featured X-ray room at a practical price.
- Choose the right detector for your facility's needs.
- Scalable, flexible and reliable.
- CARESTREAM ImageView Software provides you with improved cybersecurity.



Physicist/ Bio Engin.

- SmartGrid image processing supports pristine image quality without the use of a traditional grid.

Navigate the All-New DR-FIT X-ray System.

Experience Versatility, Functionality and Superb Image Quality.



Functional Lighting allows the radiographer to know the system's status quickly and easily.

Image Preview display on the tubehead allows technologists to remain with patients during exams.

Color-coded buttons on the tubehead handle match colors on the overhead rails so technologists know instantly which button controls which movement.

Optional Auto-Centering maximizes ease of use and speeds workflow.

Additional Features

Swipe-n-Go Login provides fast, secure access, no keyboard required.

Common User Interface for all Carestream DR products reduces training time and allows technologists to move with ease between Carestream systems.

Optional Features

SmartGrid Image Processing supports pristine image quality without the use of a traditional grid.

Auto-LLI facilitates easy acquisition of long-length imaging.

Auto Collimation provides precise auto-positioning for ease of use and accelerated exam times.

Motorized Operation increases productivity and workflow – choose from three different motorized configurations.

Choose the best configuration for your facility and budget.

Maybe your facility's infrastructure or budget doesn't support an overhead tube.

No worries – the affordable DR-FIT System floor-mount tubehead has a small footprint and installation is a breeze – making it a great choice for your facility.



Meet Our Family of DR Detectors at carestream.com/detectors.



Functional Lighting indicates system's status.

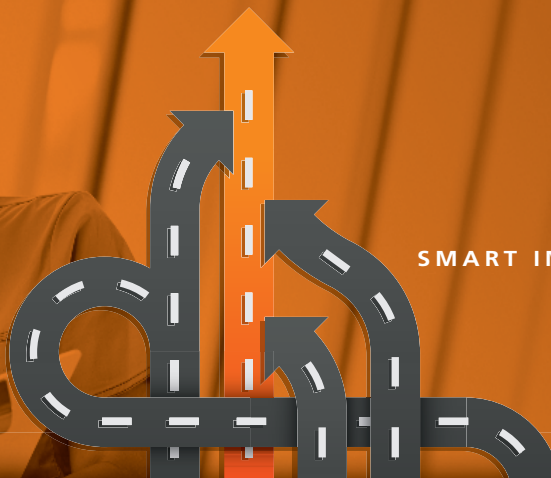
Optional vertical Auto-Tracking for easier positioning and workflow efficiency.

Telescoping Arm offers easier patient positioning.

Floor-mounted tubestand slides for faster workflow.

NO MATTER WHICH ROAD YOU'RE ON,
WE'LL GET YOU WHERE
YOU NEED TO GO.

SMART IMAGING SOLUTIONS



The Fastest Route to a Successful Imaging Future.

As you travel to the future of imaging, what's your next step? Perhaps you need to accelerate your X-ray workflow. Or add a new imaging solution to your facility to provide better patient care.

Wherever you're headed, we have the smart solutions you need: Full-digital imaging rooms and leading-edge mobile units. Wireless, shareable detectors and CR-to-DR retrofit kits. Affordable CR systems. Advanced digital imagers and our Managed Print Solutions service. And as always, the gold-standard in X-ray film technology.

Start Mapping Your Route Today.

From small clinics, urgent care facilities and specialty practices to large hospitals and imaging centers, every facility will find a Carestream solution to meet the most specific needs. Visit carestream.com and start your journey to greater productivity and a higher standard of patient care.

Carestream also offers Non-Destructive Testing solutions to help ensure quality and safety in the aerospace, petrochemical and other industries, as well as Contract Manufacturing to bring innovative coated products to market.

A Community of Service and Support.

For dependable service, look to our Customer Success Network. We work continuously to improve your imaging performance, help you to innovate as needs change, and make the most of your budget and resources. Carestream's Customer Success Network surrounds you with a dynamic team of experts, with a Single Point of Entry for easy, customized access to the right people in every situation. You and your patients will benefit from the expertise and best practices only Carestream can deliver.



Eclipse: Harness the Power of Decades of Innovation.

Carestream's Eclipse is the engine behind our innovative imaging software. It uses AI technology and proprietary algorithms to significantly increase the value of the entire imaging chain, from capture to diagnosis.

carestream.com



"Rx only"

© Carestream Health, Inc., 2021. CARESTREAM is a trademark of Carestream Health. CAT 2001 281 4/21

Carestream