



bar·ray®
personal radiation protection



PERSONALIZATION AVAILABLE

See page 37 for monogram options.

POCKET INCLUDED

See page 37 for embroidery options.

ADDED COMFORT

Shoulder pads offer additional comfort.

VELCRO STRAPS

Shrug shoulders to highest point, attach velcro straps and release shoulders. By doing so, the apron weight is transferred from the shoulders to the waist area, reducing stress on the neck and back.



Shown in Fun and Fashion Print #703

VARI-WEIGHT

Our most popular apron provides greater weight distribution and comfort. Two fully adjustable velcro straps cross the back and attach at the front of the apron, providing a comfortable fit while keeping the apron on the shoulders. Shoulder pads offer additional comfort.

0.50MM PROTECTION

55350	PRESTIGE (Lightest Weight — Lead Free)
45350	STARLITE (Lightweight — Lead Free)
65350	TRUELITE (Lightweight — Contains Lead)
60008	COST CRUNCHER (Traditional Weight — Contains Lead)

0.35MM PROTECTION

75350	PRESTIGE (Lightest Weight — Lead Free)
85350	STARLITE (Lightweight — Lead Free)
35350	TRUELITE (Lightweight — Contains Lead)
30008	COST CRUNCHER (Traditional Weight — Contains Lead)

60099 Upcharge Aprons Larger Than Sizes Found on Chart

PERSONALIZATION AVAILABLE

See page 37 for monogram options.

POCKET INCLUDED

See page 37 for embroidery options.

FULLY ADJUSTABLE

Velcro straps across back. Shoulder pads for additional comfort.

STRETCH BACK

Shrug shoulders to highest point, attach velcro straps and release shoulders. By doing so, the apron weight is transferred from the shoulders to the waist area, reducing stress on the neck and back.

The stretch back option offers additional back support.

VARI-FLEX

This apron has the same fully adjustable velcro strap design as our Vari-Weight apron with the addition of an elastic insert in the rear flaps, offering greater adjustment and support. Velcro shoulder strap prevents slippage while shoulder pads offer additional comfort.

0.50MM PROTECTION

- 55300 PRESTIGE (Lightest Weight — Lead Free)
- 45300 STARLITE (Lightweight — Lead Free)
- 65300 TRUELITE (Lightweight — Contains Lead)
- 60030 COST CRUNCHER (Traditional Weight — Contains Lead)

0.35MM PROTECTION

- 75300 PRESTIGE (Lightest Weight — Lead Free)
- 85300 STARLITE (Lightweight — Lead Free)
- 35300 TRUELITE (Lightweight — Contains Lead)
- 30030 COST CRUNCHER (Traditional Weight — Contains Lead)

- 60099 Upcharge Aprons Larger Than Sizes Found on Chart



Shown in Fun and Fashion Print #636

PERSONALIZATION AVAILABLE

See page 37 for monogram options.

POCKET INCLUDED

See page 37 for embroidery options.

ADDED COMFORT

Velcro straps across back.
Shoulder pads for additional comfort.

6" WIDE WEB BELT

This wide belt option offers
back support for short-term or
long-term procedures.



Shown in Fun and Fashion Print #642



WIDE BELT

A fully adjustable 6" wide elastic belt transfers the apron weight from the shoulders to the hips, making this apron the most comfortable for longer procedures. Just shrug your shoulders and adjust the belt to a comfortable position. Shoulder pads offer additional comfort. Velcro shoulder strap keeps the apron snug across the upper back, preventing shoulder slippage.

0.50MM PROTECTION

56400	PRESTIGE (Lightest Weight — Lead Free)
46400	STARLITE (Lightweight — Lead Free)
66400	TRUELITE (Lightweight — Contains Lead)
61420	COST CRUNCHER (Traditional Weight — Contains Lead)

0.35MM PROTECTION

76400	PRESTIGE (Lightest Weight — Lead Free)
86400	STARLITE (Lightweight — Lead Free)
36400	TRUELITE (Lightweight — Contains Lead)
31420	COST CRUNCHER (Traditional Weight — Contains Lead)

67892 Replacement wide belt, specify size: S-M-L

60099 Upcharge Aprons Larger Than Sizes Found on Chart

PERSONALIZATION AVAILABLE

See page 37 for monogram options.

POCKET INCLUDED

See page 37 for embroidery options.

ADDED COMFORT

Velcro straps across back.
Shoulder pads for additional comfort.

1" STRAPS

Straps cross the waist and tie
in the front, providing a snug fit.



STANDARD

Durable yet soft 1" straps cross the waist and tie securely in front, providing a snug and comfortable fit. Velcro shoulder strap prevents slippage and the included shoulder pads offer additional comfort.

0.50MM PROTECTION

- 57405 PRESTIGE (Lightest Weight — Lead Free)
- 47405 STARLITE (Lightweight — Lead Free)
- 67405 TRUELITE (Lightweight — Contains Lead)
- 60948 COST CRUNCHER (Traditional Weight — Contains Lead)

0.35MM PROTECTION

- 77405 PRESTIGE (Lightest Weight — Lead Free)
- 87405 STARLITE (Lightweight — Lead Free)
- 37405 TRUELITE (Lightweight — Contains Lead)
- 30948 COST CRUNCHER (Traditional Weight — Contains Lead)

- 60099 Upcharge Aprons Larger Than Sizes Found on Chart

Shown in Fun and Fashion Print #555

PERSONALIZATION AVAILABLE

See page 37 for monogram options.

POCKET INCLUDED

See page 37 for embroidery options.

ADDED COMFORT

Velcro strap across back.
Shoulder pads for additional comfort.

2" WIDE WEB BELT

Web belt provides adjustment with
velcro or buckle closure.



Shown in Fun and Fashion Print #763

DELUXE

A fully adjustable 2" wide web belt provides maximum adjustment with your choice of velcro or buckle closure. Easy on/off design. Velcro shoulder strap prevents slippage and included shoulder pads offer additional comfort.

0.50MM PROTECTION

57400	PRESTIGE (Lightest Weight — Lead Free)
47400	STARLITE (Lightweight — Lead Free)
67400	TRUELITE (Lightweight — Contains Lead)
60947	COST CRUNCHER (Traditional Weight — Contains Lead)

0.35MM PROTECTION

77400	PRESTIGE (Lightest Weight — Lead Free)
87400	STARLITE (Lightweight — Lead Free)
37400	TRUELITE (Lightweight — Contains Lead)
30947	COST CRUNCHER (Traditional Weight — Contains Lead)

60099 Upcharge Aprons Larger Than Sizes Found on Chart

PERSONALIZATION AVAILABLE

See page 37 for monogram options.

ADDED COMFORT

Velcro strap across back. Shoulder pads for additional comfort.

1" STRAPS

Straps cross the waist and tie in the front, providing a snug fit.



ECONOMY

Same high quality as our Standard, but economically priced. 1" ties at waist and velcro shoulder strap keep apron snug.

0.50MM PROTECTION

- 56949 PRESTIGE (Lightest Weight — Lead Free)
- 46949 STARLITE (Lightweight — Lead Free)
- 66949 TRUELITE (Lightweight — Contains Lead)
- 60949 COST CRUNCHER (Traditional Weight — Contains Lead)

0.35MM PROTECTION

- 76949 PRESTIGE (Lightest Weight — Lead Free)
- 86949 STARLITE (Lightweight — Lead Free)
- 36949 TRUELITE (Lightweight — Contains Lead)
- 30949 COST CRUNCHER (Traditional Weight — Contains Lead)

- 60099 Upcharge Aprons Larger Than Sizes Found on Chart

Shown in Fun and Fashion Print #616

PERSONALIZATION AVAILABLE

See page 37 for monogram options.

POCKET INCLUDED

See page 37 for embroidery options.

ADDED COMFORT

Velcro tabs shoulders offer quick drop-off.
Shoulder pads for additional comfort.

STRETCH BACK

Shrug shoulders to highest point, attach velcro straps and release shoulders. By doing so, the apron weight is transferred from the shoulders to the waist area, reducing stress on the neck and back.

The stretch back option offers additional back support. Velcro shoulder tabs offer quick drop-off in the OR.

O.R. FLEX

Similar in style to the Vari-Flex apron, with the addition of velcro tabs at the shoulders for quick drop-off in the OR. An assistant releases the two tabs and the apron drops to the floor without compromising the sterile field. The stretch back offers greater adjustment and support. Shoulder pads offer additional comfort.

0.50MM PROTECTION

55345	PRESTIGE (Lightest Weight — Lead Free)
45345	STARLITE (Lightweight — Lead Free)
65345	TRUELITE (Lightweight — Contains Lead)
60684	COST CRUNCHER (Traditional Weight — Contains Lead)

0.35MM PROTECTION

75345	PRESTIGE (Lightest Weight — Lead Free)
85345	STARLITE (Lightweight — Lead Free)
35345	TRUELITE (Lightweight — Contains Lead)
30684	COST CRUNCHER (Traditional Weight — Contains Lead)

60099 Upcharge Aprons Larger Than Sizes Found on Chart



Shown in Fun and Fashion Print #732

PERSONALIZATION AVAILABLE

See page 37 for monogram options.

POCKET INCLUDED

See page 37 for embroidery options.

ADDED COMFORT

Shoulder pads offer additional comfort.

QUICK RELEASE

Velcro straps cross the back and secure to the front of the apron. Designed to release quickly under surgical gown without compromising sterile field.



SURGICAL DROP OFF

Designed to be removed from under surgical gowns without compromising sterile fields. The two straps cross the back and velcro securely and snugly to the front of the apron. By releasing the velcro straps at the hips, the apron slides off the body. Shoulder pads offer additional comfort.

0.50MM PROTECTION

- 55319 PRESTIGE (Lightest Weight — Lead Free)
- 45319 STARLITE (Lightweight — Lead Free)
- 65319 TRUELITE (Lightweight — Contains Lead)
- 60022 COST CRUNCHER (Traditional Weight — Contains Lead)

0.35MM PROTECTION

- 75319 PRESTIGE (Lightest Weight — Lead Free)
- 85319 STARLITE (Lightweight — Lead Free)
- 35319 TRUELITE (Lightweight — Contains Lead)
- 30022 COST CRUNCHER (Traditional Weight — Contains Lead)

- 60099 Upcharge Aprons Larger Than Sizes Found on Chart

Shown in Fun and Fashion Print #605

PERSONALIZATION AVAILABLE

See page 37 for monogram options.

POCKET INCLUDED

See page 37 for embroidery options.

ADDED COMFORT

• Velcro strap across back.
• Shoulder pads for additional comfort.

PADDED INSERTS

• Belt provides comfort offered by two padded back support inserts.



Shown in Fun and Fashion Print #715

ECONOMY STRETCH BELT

A fully adjustable 2" wide web buckle belt with the addition of padded elastic inserts provides a more comfortable, personalized fit. Velcro shoulder strap prevents slippage and included shoulder pads offer additional comfort.

0.50MM PROTECTION

57650	PRESTIGE (Lightest Weight — Lead Free)
47650	STARLITE (Lightweight — Lead Free)
67650	TRUELITE (Lightweight — Contains Lead)
60015	COST CRUNCHER (Traditional Weight — Contains Lead)

0.35MM PROTECTION

77650	PRESTIGE (Lightest Weight — Lead Free)
87650	STARLITE (Lightweight — Lead Free)
37650	TRUELITE (Lightweight — Contains Lead)
30015	COST CRUNCHER (Traditional Weight — Contains Lead)

60099 Upcharge Aprons Larger Than Sizes Found on Chart

VESTS

phone 800-359-6115 | fax 717-359-9109 | web www.bar-ray.com

0.50MM PROTECTION

Vest — 0.25mm each front flap (0.50mm at overlap), 0.25mm back
Reverse Vest — 0.50mm front, 0.25mm each rear flap (0.50mm at overlap)

0.40MM PROTECTION

Vest — 0.20mm each front flap (0.40mm at overlap), 0.20mm back
Reverse Vest — 0.40mm front, 0.20mm each rear flap (0.40mm at overlap)

60099 Upcharge Vests Larger Than Sizes Found on Chart

STANDARD VEST: VELCRO CLOSURE

Standard vest with velcro closure has inside buckle to keep inner panel from sagging. Features shoulder pads and chest pocket.

0.50MM	PRESTIGE	STARLITE	TRUELITE	COST CRUNCHER
MALE	V56650	V46650	V66650	V60650
FEMALE	V56605	V46605	V66605	V60605
0.40MM	PRESTIGE	STARLITE	TRUELITE	COST CRUNCHER
MALE	V76650	V86650	V36650	V30650
FEMALE	V76605	V86605	V36605	V30605



Shown in Fun and Fashion
Print #707

For an accurate fit, provide us with your measurements.

STANDARD VEST: BUCKLE CLOSURE

Standard vest with buckle closure to keep outer panel from sagging. Features shoulder pads and chest pocket.

0.50MM	PRESTIGE	STARLITE	TRUELITE	COST CRUNCHER
MALE	V51234	V41324	V61234	V60234
FEMALE	V54321	V44321	V64321	V60321
0.40MM	PRESTIGE	STARLITE	TRUELITE	COST CRUNCHER
MALE	V71234	V81234	V31234	V30234
FEMALE	V74321	V84321	V34321	V30321



Shown in Fun and Fashion
Print #738

**Mix and match any
vest with any skirt to
CREATE YOUR OWN SET!**

Skirts located on page 13

CHOOSE YOUR VEST...

0.50MM PROTECTION

Vest — 0.25mm each front flap (0.50mm at overlap), 0.25mm back
Reverse Vest — 0.50mm front, 0.25mm each rear flap (0.50mm at overlap)

0.40MM PROTECTION

Vest — 0.20mm each front flap (0.40mm at overlap), 0.20mm back
Reverse Vest — 0.40mm front, 0.20mm each rear flap (0.40mm at overlap)

60099 Upcharge Vests Larger Than Sizes Found on Chart



Shown in Fun and Fashion
Print #617

REVERSE VEST

The reverse vest works on the same principle as the Vari-Flex apron. The elastic back offers greater adjustment, comfort and support during long procedures. Shrug your shoulders prior to attaching velcro straps. The vest features shoulder pads and a pocket.

0.50MM	PRESTIGE	STARLITE	TRUELITE	COST CRUNCHER
MALE	V56650R	V46650R	V66650R	V60650R
FEMALE	V56605R	V46605R	V66605R	V60605R
0.40MM	PRESTIGE	STARLITE	TRUELITE	COST CRUNCHER
MALE	V76650R	V86650R	V36650R	V30650R
FEMALE	V76605R	V86605R	V36605R	V30605R

For an accurate fit, provide us with your measurements.



Shown in Fun and Fashion
Print #510

WIDE BELT VEST

We've taken the Standard Vest and added an adjustable 6" wide elastic belt to help transfer the apron weight from the shoulders to the hip area. Shrug your shoulders and adjust the belt to a comfortable position. Features shoulder pads and chest pocket.

0.50MM	PRESTIGE	STARLITE	TRUELITE	COST CRUNCHER
MALE	V54974	V44974	V64974	V60974
FEMALE	V54265	V44265	V64265	V60265
0.40MM	PRESTIGE	STARLITE	TRUELITE	COST CRUNCHER
MALE	V74974	V84974	V34974	V30974
FEMALE	V74265	V84265	V34265	V30265

SKIRTS

phone 800-359-6115 | fax 717-359-9109 | web www.bar-ray.com

0.50MM PROTECTION

Skirt — 0.25mm each front flap (0.50mm at overlap), 0.25mm back

0.40MM PROTECTION

Skirt — 0.20mm each front flap (0.40mm at overlap), 0.20mm back

60099 Upcharge Skirts Larger Than Sizes
Found on Chart

Mix and match any
vest with any skirt to

CREATE YOUR OWN SET!

Vests located on pages 11-12

STANDARD SKIRT

Standard skirt features non-slip material to keep skirt from sliding down. Great for those with no hips. 2" buckle closure with hip pocket included.

0.50MM	PRESTIGE	STARLITE	TRUELITE	COST CRUNCHER
UNISEX	S54862	S44862	S64862	S60862
0.40MM	PRESTIGE	STARLITE	TRUELITE	COST CRUNCHER
UNISEX	S74862	S84862	S34862	S30862



Shown in Fun and Fashion
Print #638

STANDARD SKIRT WITH SUSPENDERS

Standard skirt with the addition of suspenders to keep skirt from sliding down. 2" buckle closure with hip pocket included.

0.50MM	PRESTIGE	STARLITE	TRUELITE	COST CRUNCHER
UNISEX	S57537	S47537	S67537	S60537
0.40MM	PRESTIGE	STARLITE	TRUELITE	COST CRUNCHER
UNISEX	S77537	S87537	S37537	S30537



Shown in Fun and Fashion
Print #677

**For an accurate fit, provide us
with your measurements.**

PERSONALIZATION AVAILABLE

See page 37 for monogram options.

POCKET INCLUDED

See page 37 for embroidery options.

ADDED COMFORT

Shoulder pads offer additional comfort.

WIDE BELT

This wide belt option offers back support for short-term or long-term procedures.

COMFORT WRAP

A new twist on an old design. Our new style wrap around apron offers complete protection with a full frontal overlap and unique over-the-shoulder closure. Apron has inside buckle to keep inner panel from sagging. A minimal amount of velcro means no catching on your clothes and wrestling with the apron to line up all the velcro, yet the apron stays comfortably in place.

The attached wide belt, when properly adjusted, moves the majority of the weight from the shoulders to the hips. An ideal choice for those who do not like a two-piece design and have found that a standard wrap around is not a comfortable option.

0.25MM EACH FRONT FLAP (0.50MM AT OVERLAP), 0.25MM BACK

56565	PRESTIGE (Lightest Weight — Lead Free)
46565	STARLITE (Lightweight — Lead Free)
66565	TRUELITE (Lightweight — Contains Lead)
60565	COST CRUNCHER (Traditional Weight — Contains Lead)

0.20MM EACH FRONT FLAP (0.40MM AT OVERLAP), 0.20MM BACK

76565	PRESTIGE (Lightest Weight — Lead Free)
86565	STARLITE (Lightweight — Lead Free)
36565	TRUELITE (Lightweight — Contains Lead)
30565	COST CRUNCHER (Traditional Weight — Contains Lead)

67892 Replacement wide belt, specify size: S-M-L

60099 Upcharge Aprons Larger Than Sizes Found on Chart



Shown in Fun and Fashion Print #799

WIDE BELT WRAP AROUND

phone 800-359-6115 | fax 717-359-9109 | web www.bar-ray.com

PERSONALIZATION AVAILABLE

See page 37 for monogram options.

POCKET INCLUDED

See page 37 for embroidery options.

ADDED COMFORT

Shoulder pads offer additional comfort.

6" WIDE WEB BELT

This wide belt option offers back support for short-term or long-term procedures.



WIDE BELT WRAP AROUND

Full wrap around protection against direct and scatter radiation. The 6" wide elastic back saver belt, when properly adjusted, removes the weight of the apron from the shoulders to the hips. Full length, adjustable, frontal velcro closure assures a comfortable, secure fit. Chest and hip pocket are included.

0.50MM FRONT, 0.25MM EACH FRONT FLAP (0.50MM AT OVERLAP)

- 56590 PRESTIGE (Lightest Weight — Lead Free)
- 46590 STARLITE (Lightweight — Lead Free)
- 66590 TRUELITE (Lightweight — Contains Lead)
- 60590 COST CRUNCHER (Traditional Weight — Contains Lead)

0.40MM FRONT, 0.20MM EACH FRONT FLAP (0.40MM AT OVERLAP)

- 76590 PRESTIGE (Lightest Weight — Lead Free)
- 86590 STARLITE (Lightweight — Lead Free)
- 36590 TRUELITE (Lightweight — Contains Lead)
- 30590 COST CRUNCHER (Traditional Weight — Contains Lead)
- 67892 Replacement wide belt, specify size: S-M-L

- 60099 Upcharge Aprons Larger Than Sizes Found on Chart

Shown in Fun and Fashion Print #710

PERSONALIZATION AVAILABLE

See page 37 for monogram options.

POCKET INCLUDED

See page 37 for embroidery options.

ADDED COMFORT

Shoulder pads offer additional comfort.

6" WIDE WEB BELT

Very popular style among men.



Shown in Fun and Fashion Print #719

DIAMOND BACK

Closes in the back and has a belt that pulls through the side and fastens in the front for easy adjustment. It will accommodate a wider range of sizes due to the pull-through belt design.

0.50MM FRONT, 0.25MM EACH REAR FLAP (0.50MM AT OVERLAP)

56254	PRESTIGE (Lightest Weight — Lead Free)
46254	STARLITE (Lightweight — Lead Free)
66254	TRUELITE (Lightweight — Contains Lead)
64572	COST CRUNCHER (Traditional Weight — Contains Lead)

0.40MM FRONT, 0.20MM EACH REAR FLAP (0.40MM AT OVERLAP)

76254	PRESTIGE (Lightest Weight — Lead Free)
86549	STARLITE (Lightweight — Lead Free)
36254	TRUELITE (Lightweight — Contains Lead)
34572	COST CRUNCHER (Traditional Weight — Contains Lead)
67892	Optional wide belt, specify size: S-M-L

60099 Upcharge Aprons Larger Than Sizes Found on Chart

STRETCH BACK REVERSE WRAP

phone 800-359-6115 | fax 717-359-9109 | web www.bar-ray.com

PERSONALIZATION AVAILABLE

See page 37 for monogram options.

POCKET INCLUDED

See page 37 for embroidery options.

ADDED COMFORT

Shoulder pads offer additional comfort.

STRETCH BACK

Shrug shoulders to highest point, attach velcro straps and release shoulders. By doing so, the apron weight is transferred from the shoulders to the waist area, reducing stress on the neck and back.

The stretch back option offers additional back support. Very popular maternity apron option.



STRETCH BACK REVERSE WRAP

Based on the design of our Vari-Flex apron and Reverse Vest, this version of the wrap around apron offers full protection with the added benefit of a stretch back. The elastic back offers greater adjustment, comfort and support during long procedures. **THERE'S ALSO NO BELT TO LOSE WITH THIS MODEL!**

0.50MM FRONT, 0.25MM EACH REAR FLAP (0.50MM AT OVERLAP)

- 56582 PRESTIGE (Lightest Weight — Lead Free)
- 46582 STARLITE (Lightweight — Lead Free)
- 66582 TRUELITE (Lightweight — Contains Lead)
- 60582 COST CRUNCHER (Traditional Weight — Contains Lead)

0.40MM FRONT, 0.20MM EACH REAR FLAP (0.40MM AT OVERLAP)

- 76582 PRESTIGE (Lightest Weight — Lead Free)
- 86582 STARLITE (Lightweight — Lead Free)
- 36582 TRUELITE (Lightweight — Contains Lead)
- 30582 COST CRUNCHER (Traditional Weight — Contains Lead)

- 60099 Upcharge Aprons Larger Than Sizes Found on Chart

Shown in Fun and Fashion Print #712



COOL PACK INSERT *EXCLUSIVELY* from Bar-Ray

Unique cooling system provides long-lasting, temperature-regulated cool comfort without being ice-cold, and may be charged and re-used an unlimited number of times. These cells provide a constant temperature until 100% of their cooling charge is exhausted, a condition indicated by the cells changing from opaque white to completely clear. The cool pack provides over three hours of continuous cooling comfort* and is quickly recharged within 1 hour when stored in a refrigerator. The cool pack is made with a smooth hypoallergenic surface that cleans with standard disinfectants. It is latex free and safe for direct skin contact.

The cool pack is easily inserted into a mesh pocket sewn onto the inside panel of the garment.

PRODUCT #	DETAILS	DIMENSIONS	WEIGHT
67913	Cool Pack Insert – Set of 2	11 1/2"L x 11 1/2"W	4 lb. set
62894	Additional Cool Pack – Single	11 1/2"L x 11 1/2"W	2 lbs. each

* Typical cooling duration in a medical treatment and diagnostic environment. Actual cooling times will vary with body mass, exertion level, metabolism and environmental temperature.

Authorized Manufacturer For

**APRON
CHECK.com**

- Bar-Ray is an authorized apron manufacturer certified to install the necessary components needed to match up with the software you purchase from ApronCheck. Important — only a select few apron manufacturers are permitted to install the components. There is no additional charge for us preparing the garments. Don't run the risk of voiding your guarantee or having the ApronCheck software not perform properly.

About ApronCheck.com:

- ApronCheck is a unique standardized radiation safety apparel tracking and documentation system that is rapidly becoming the standard methodology utilized in the U.S. and abroad.
- ApronCheck is a "key" tool to show a true picture of your safety apparel needs.
- ApronCheck helps you in both compliance with regulatory agencies and management of radiation safety apparel.
- ApronCheck will allow savings by lowering the cost associated with employees manually inputting data and hunting for safety apparel throughout your facility.
- Implementing ApronCheck allows computerized record keeping, such as RIS, PACS and EMR, that are the standard for today's medical facilities.
- Contact ApronCheck.com for software purchasing information.

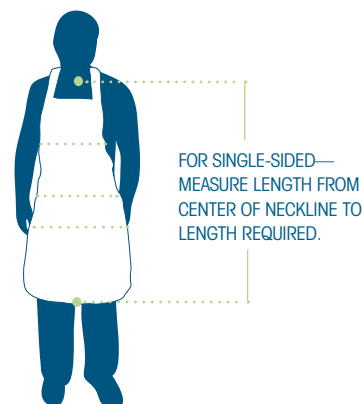
SIZING CHARTS

phone 800-359-6115 | fax 717-359-9109 | web www.bar-ray.com

If you do not find your size in these charts, we are glad to assist you with custom sizing.

FRONT PROTECTION APRON SIZING CHART UNISEX

FRONTAL Apron Size	ACTUAL Apron Size	Fits Dress Size	Fits Suit Size	Max Chest/Hip Measurement	Fits Max Height
small	20" x 32"	4 - 6	34 - 36	36"	5' 6"
medium	22" x 34"	8 - 10	38 - 40	40"	5' 10"
large	24" x 36"	12 - 14	42 - 44	44"	6' 0"
x-large	26" x 38"	16 - 18	46 - 48	48"	6' 2"
xx-large	28" x 40"	20 - 22	50 - 52	52"	6' 4"



VEST SIZING CHART MALE

Size Name	Chest Size	Length
x-small	35" - 36"	23 1/2"
small	37" - 38"	24 1/2"
medium	39" - 40"	25"
large	41" - 42"	25 1/2"
x-large	43" - 44"	26"
2X	45" - 46"	26 1/2"
3X	47" - 48"	27"

VEST SIZING CHART FEMALE

Size Name	Chest Size	Length
x-small	33" - 34"	21"
small	35" - 36"	21 1/2"
medium	37" - 38"	22"
large	39" - 40"	22 1/2"
x-large	41" - 42"	23"
2X	43" - 44"	23 1/2"
3X	45" - 46"	24"

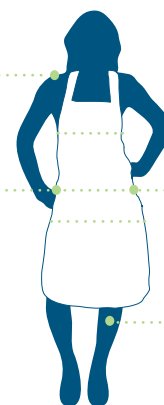
SKIRT SIZING CHART UNISEX

Size Name	Waist Size	Hip Size	Length
x-small	26" - 27"	33" - 34"	19"
small	28" - 29"	35" - 36"	19"
medium	30" - 31"	37" - 38"	20"
M2	32" - 33"	39" - 40"	20"
large	34" - 35"	41" - 42"	21"
L2	36" - 37"	43" - 44"	21"
x-large	38" - 39"	45" - 46"	22"
2X	40" - 41"	47" - 48"	22"
3X	42" - 43"	49" - 50"	23"

FOR VEST—
MEASURE LENGTH
FROM TOP OF
SHOULDER TO WAIST.

ADD 2" FOR
PROPER OVERLAP.

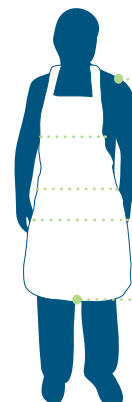
FOR SKIRT—
MEASURE LENGTH FROM
WAIST TO KNEE.



WRAP AROUND SIZING CHART UNISEX

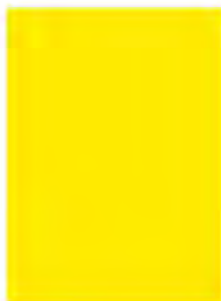
Wrap Size	Chest Size	Waist Size	Hip Size	Front Length	Rear Length
small 18" Wide	33" - 36"	34" - 37"	35" - 38"	36"	32"
medium 20" Wide	37" - 40"	38" - 41"	39" - 42"	38"	34"
large 22" Wide	41" - 44"	42" - 45"	43" - 46"	40"	36"
x-large 24" Wide	45" - 48"	46" - 49"	47" - 50"	42"	38"

FOR WRAP AROUND—
MEASURE LENGTH FROM
TOP OF SHOULDER TO
LENGTH REQUIRED.



All aprons, regardless of style, are available in any fabric.

NYLON FABRIC



#1



#3



#5



#6



#9



#10



#13



#19



#21



#22



#23



#30



#32



#34



#35



#40



#41



#42



#43



#44



#46



#47

*Color of the
Breast Cancer
Awareness
Foundation*



#48

YOUR OWN LOGO

Bar-Ray now has the ability to offer you customized products like no one else.

- Never before could you proudly display your logo—on one apron, the entire department or all aprons throughout the hospital. Adding the department name near the logo helps to ensure the apron stays in the proper department. Helps prevent aprons from “walking out of the hospital” when personnel leave. Minimum is ONE apron or item. No commitment beyond that.
- By providing us with your logo and written permission to use your logo, we are able to print it onto the fabric, giving you the most personalized product on the market.
- You can choose to have the logo fabric on the front or the back or both of the apron or item.
- To ensure your complete satisfaction, before the fabric is printed we will send you an image to approve. Prefer to see an actual sample of the fabric with your logo? No problem.
- Personalize aprons, blankets, mobile shields or other similar items.

PRODUCT #	DETAILS
69988	Digitize Your Logo (a one-time fee per logo)
69993	Pick Your Own Design (per product)



All aprons, regardless of style, are available in any fabric.

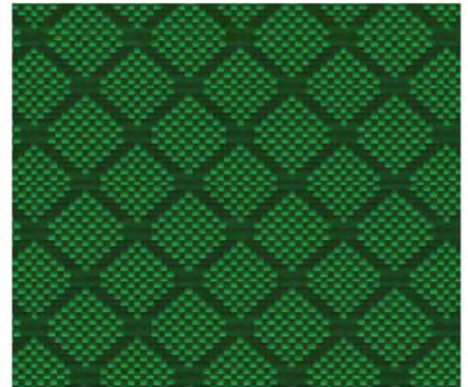
FUN AND FASHION 63495



#300



#301



#302



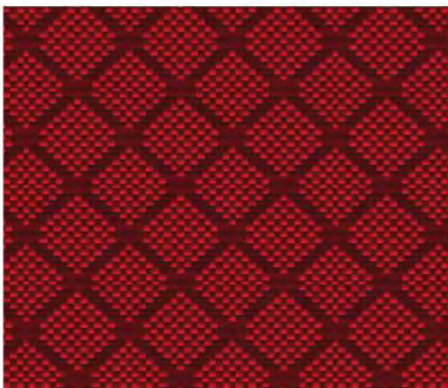
#303



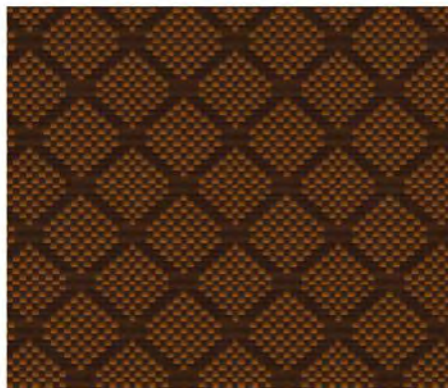
#304



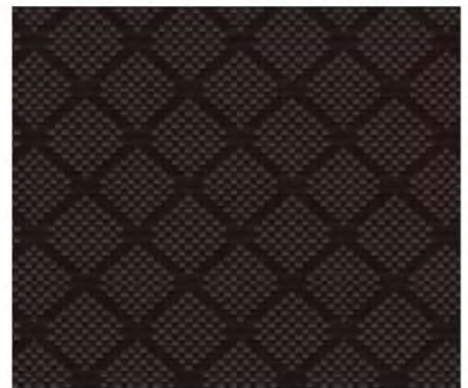
#305



#306



#307



#308

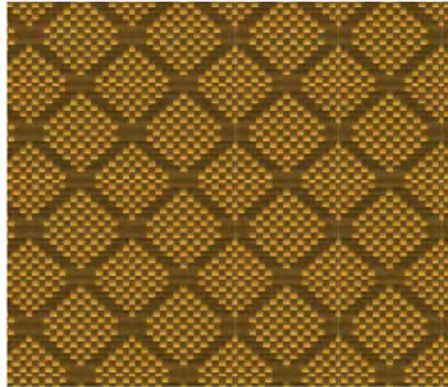
Visit www.bar-ray.com to view hundreds of fabric designs available
Images have been enlarged for viewing clarity.

All aprons, regardless of style, are available in any fabric.

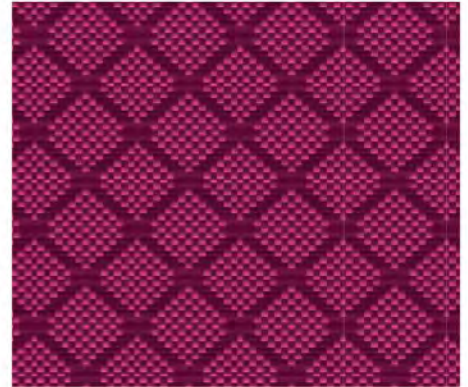
FUN AND FASHION 63495



#309



#310



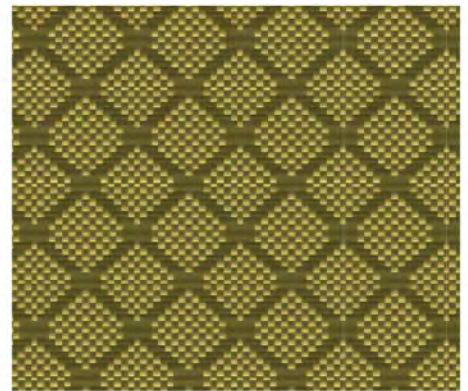
#311



#312



#313



#314



#315



#316



#317

Visit www.bar-ray.com to view hundreds of fabric designs available
Images have been enlarged for viewing clarity.

All aprons, regardless of style, are available in any fabric.

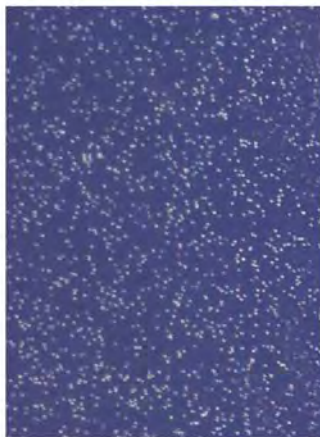
FUN AND FASHION 63495



#20



#200



#201



#202



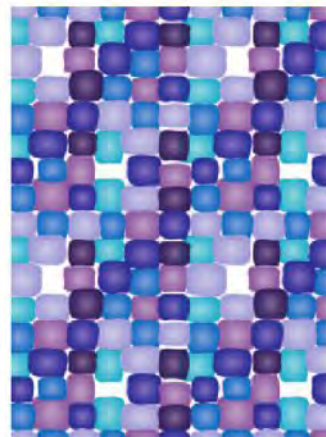
#501



#502



#505



#507



#508



#509



#510

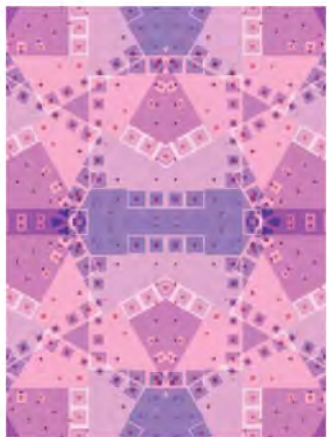


#515

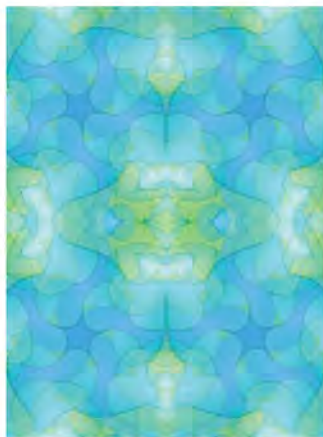
Visit www.bar-ray.com to view hundreds of fabric designs available
Images have been enlarged for viewing clarity.

All aprons, regardless of style, are available in any fabric.

FUN AND FASHION 63495



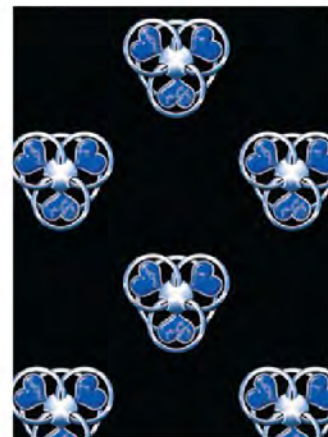
#516



#518



#520



#521



#523



#525



#526



#527



#530



#531



#532



#534

Visit www.bar-ray.com to view hundreds of fabric designs available
Images have been enlarged for viewing clarity.

All aprons, regardless of style, are available in any fabric.

FUN AND FASHION 63495



#539



#541



#542



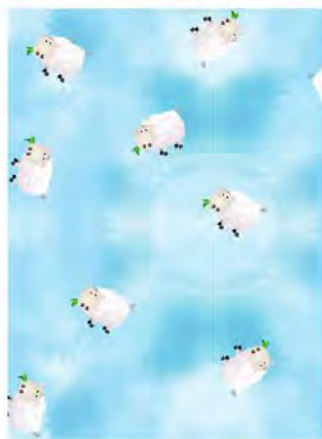
#544



#545



#546



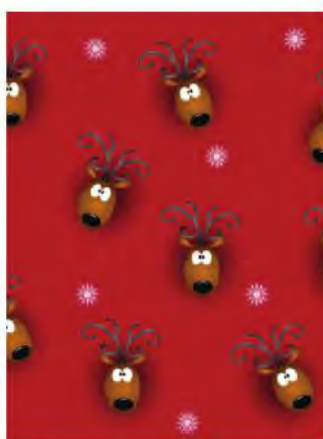
#549



#550



#552



#553



#555



#560

Visit www.bar-ray.com to view hundreds of fabric designs available
Images have been enlarged for viewing clarity.

All aprons, regardless of style, are available in any fabric.

FUN AND FASHION 63495



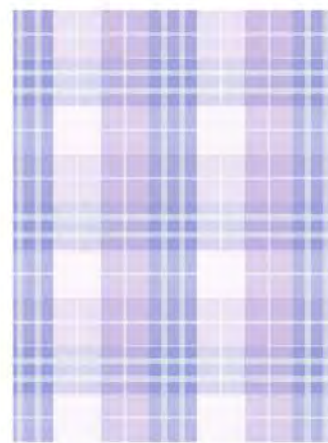
#561



#562



#564



#570



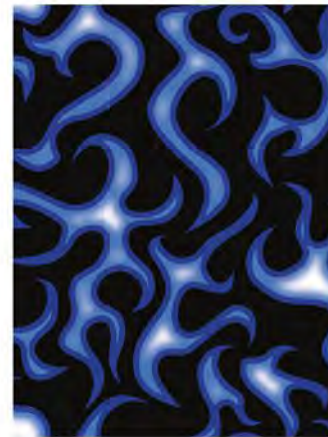
#572



#573



#575



#579



#580



#581



#582



#585

Visit www.bar-ray.com to view hundreds of fabric designs available
Images have been enlarged for viewing clarity.

All aprons, regardless of style, are available in any fabric.

FUN AND FASHION 63495



#588



#592



#594



#598



#601



#604



#605



#606



#609



#613



#614



#616

Visit www.bar-ray.com to view hundreds of fabric designs available
Images have been enlarged for viewing clarity.

All aprons, regardless of style, are available in any fabric.

FUN AND FASHION 63495



#617



#620



#621



#627



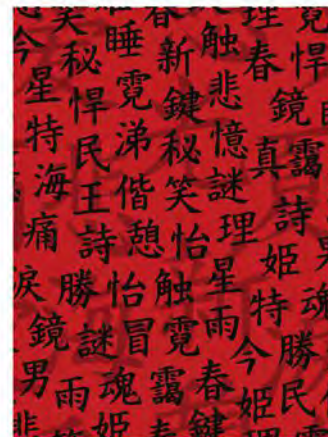
#630



#633



#635



#636



#638



#641



#642



#643

Visit www.bar-ray.com to view hundreds of fabric designs available
Images have been enlarged for viewing clarity.

All aprons, regardless of style, are available in any fabric.

FUN AND FASHION 63495



#650



#653



#663



#670



#675



#676



#677



#678



#684



#685



#686



#687

Visit www.bar-ray.com to view hundreds of fabric designs available
Images have been enlarged for viewing clarity.

All aprons, regardless of style, are available in any fabric.

FUN AND FASHION 63495



#689



#690



#696



#698



#699



#700



#701



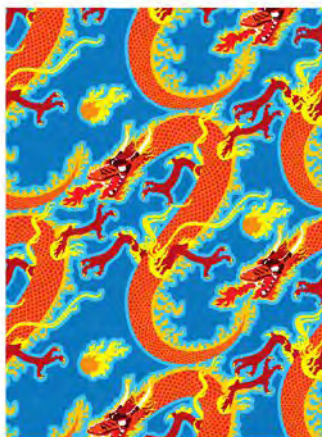
#703



#704



#705



#707



#710

Visit www.bar-ray.com to view hundreds of fabric designs available
Images have been enlarged for viewing clarity.

All aprons, regardless of style, are available in any fabric.

FUN AND FASHION 63495



#711



#712



#715



#716



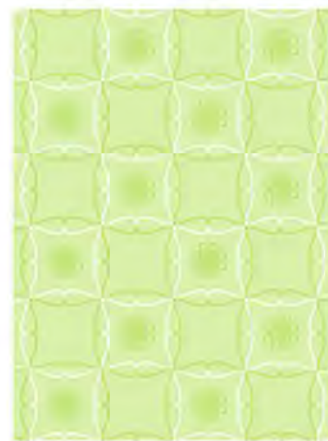
#717



#719



#720



#724



#725



#728



#732

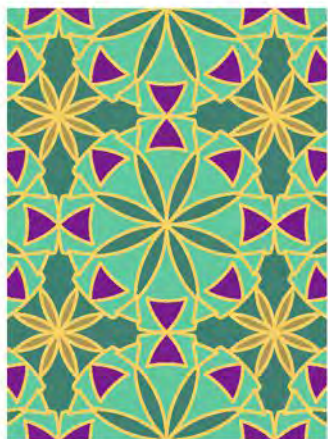


#733

Visit www.bar-ray.com to view hundreds of fabric designs available
Images have been enlarged for viewing clarity.

All aprons, regardless of style, are available in any fabric.

FUN AND FASHION 63495



#737



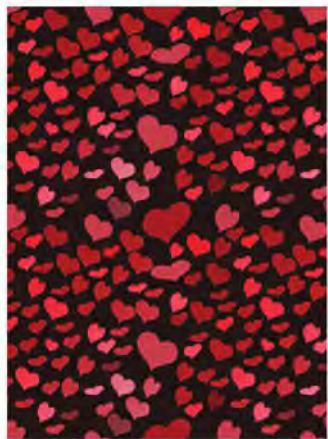
#738



#739



#744



#746



#756



#757



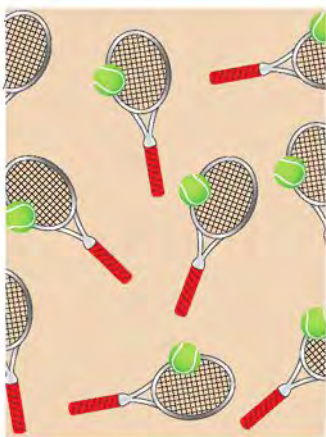
#758



#759



#760



#761



#762

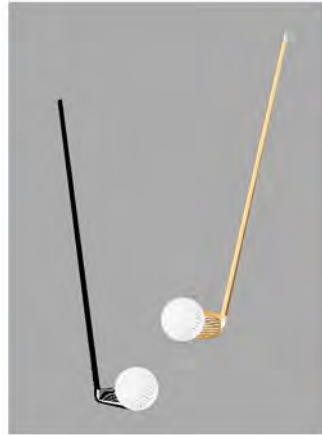
Visit www.bar-ray.com to view hundreds of fabric designs available
Images have been enlarged for viewing clarity.

All aprons, regardless of style, are available in any fabric.

FUN AND FASHION 63495



#763



#764



#767



#774



#789



#793



#799



#802



#807



#808



#813



#817

Visit www.bar-ray.com to view hundreds of fabric designs available
Images have been enlarged for viewing clarity.

All aprons, regardless of style, are available in any fabric.

FUN AND FASHION 63495



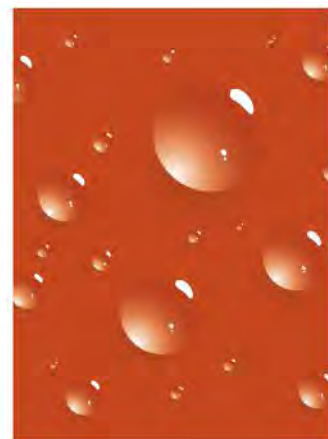
#829



#833



#835



#837



#839



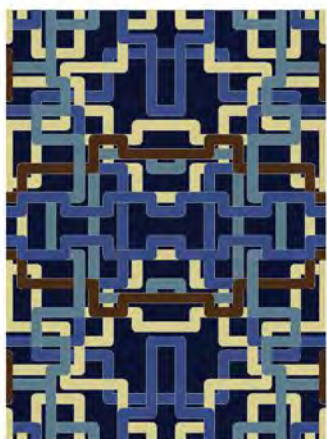
#840



#841



#842



#843



#844



#860



#862

Visit www.bar-ray.com to view hundreds of fabric designs available
Images have been enlarged for viewing clarity.



Doctor



Nurse



Caduceus



RN Logo



Chinese Health



Dancing Skeleton



Broken Bones



Spine



X-Ray Bear



X-Ray



Doctor Smiley



Heart Scroll



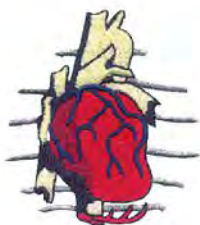
Heart with EKG



Heart with Band-Aid



Bear with Heart



Cardiology



Patriotic Heart



Heartbeat



Vet Logo #1



Deer



Eagle



Fish



Hummingbird



Small Animal Vet



Dragon

Looking for something else? Pick your own embroidery design. Go to either or both of these websites: www.greatnotions.com or www.dakotacollectibles.com. Order using our item number 69991, and give us the number of your chosen design.

NOTE: Due to copyright laws, we are unable to reproduce trademarked designs; however, if you provide us with a patch of your favorite team or design, we will be happy to sew it on your apron.



Whale Tail



Gecko



American Eagle



Hibiscus



Kidney Awareness Ribbon



Leukemia Awareness Ribbon



Prostate Awareness Ribbon



Flag Ribbon



Support Our Troops Ribbon



Gay/Lesbian Pride Ribbon



AIDS/MADD Awareness Ribbon



Autism Awareness Ribbon



Pancreatic or Thyroid Cancer Awareness Ribbon



Breast Cancer Awareness Ribbon



Ovarian, Cervical or Uterine Cancer Awareness Ribbon



Air Force



Army



Coast Guard



Marines



National Guard



Navy

MONOGRAMS, EMBROIDERIES & OTHER OPTIONS

Monograms are available for your initials, name, institution, etc.
Please specify **Block**, **ALL CAPS** or *Script*.

- 69991 Embroidery design
- 69992 Provide your own patch to be sewn on
- 63495 Fun and Fashion upcharge
- 69996 Velcro® name tags
- 69999 Monograms, name or department
- 60099 Upcharge aprons, vests, skirts and wraps larger than sizes found on chart

Examples:

Gerald Paccione, M.D.

Block

DORIS PACCIONE, M.D.

ALL CAPS

Radiology Department

Script

THYROID COLLAR

0.50mm lead equivalent protection. AVAILABLE IN ALL FABRIC COLORS.

VELCRO CLOSURE

PRESTIGE	STARLITE	TRUELITE	COST CRUNCHER	DETAILS
56821	46821	66821	60821	No top binding
56997	46997	66997	69997	No top binding tethered
56020	47241	67241	64592	No binding
56021	47242	67245	69592	No binding tethered

BUCKLE CLOSURE

PRESTIGE	STARLITE	TRUELITE	COST CRUNCHER	DETAILS
57821	41821	67821	61821	No top binding
57995	49995	67995	69995	No top binding tethered
56022	47248	67246	64598	No binding
56025	47249	67249	64599	No binding tethered

BIB COLLAR

Collar Cover not available.

PRESTIGE	STARLITE	TRUELITE	COST CRUNCHER	DETAILS
57694	47694	67694	67912	Regular - Velcro Closure
59746	49746	60694	67012	Tethered - Velcro Closure
58469	41789	65478	65896	Regular - Buckle Closure
54795	47315	62384	69245	Tethered - Buckle Closure

LARGE COLLAR

Collar Cover not available.

PRESTIGE	STARLITE	TRUELITE	COST CRUNCHER	DETAILS
54978	44132	63247	60132	Regular - Velcro Closure
52968	47895	67951	68245	Tethered - Velcro Closure
57913	47982	68374	64795	Regular - Buckle Closure
56794	45498	64978	63841	Tethered - Buckle Closure

COLLAR COVERS

NOT SHOWN. Not available for Bib Collar. NO COLOR CHOICE.

PRODUCT #	DETAILS
69986	Collar cover regular (purchase with collar)
69985	Collar cover tethered (purchase separately)
69981	Collar cover regular (purchase separately)
69980	Collar cover tethered (purchase with collar)



PAGE CAP

The Page Cap offers protection for your head against radiation scatter. A velcro closure allows for a snug fit without fear of cap sliding off head. [For an accurate fit, please specify the circumference of your head just above the eyebrows.](#) 0.5mm lead equivalent.

AVAILABLE IN ALL FABRIC COLORS.

PRODUCT #	DETAILS
48512	STARLITE (Lightweight — Lead Free)
67512	COST CRUNCHER (Traditional Weight — Contains Lead)



SLEEVES

Sleeves offer protection for the humerus bone against radiation scatter. [Specify left or right, length of sleeve, velcro/snap or sewn on attachment.](#) 0.5mm lead equivalent. AVAILABLE IN ALL FABRIC COLORS.

PRODUCT #	DETAILS
49317	STARLITE (Lightweight — Lead Free)
67931	COST CRUNCHER (Traditional Weight — Contains Lead)



SHIN GUARDS

Shin Guards offer protection for the tibia bone against radiation scatter. [For an accurate fit, please specify desired length and circumference of the calf.](#) Available in all apron colors. 0.5mm lead equivalent. AVAILABLE IN ALL FABRIC COLORS.

PRODUCT #	DETAILS
48528	STARLITE (Lightweight — Lead Free)
65828	COST CRUNCHER (Traditional Weight — Contains Lead)





PREGNANCY PANEL

Larger than a patient apron, and designed with the growing fetus in mind. Panel can be worn under any apron, alleviating the need to buy separate pieces for frontal or wrap around aprons. 0.5mm lead equivalent. 20 1/2"W x 16"L
AVAILABLE IN ALL FABRIC COLORS.

PRODUCT #	DETAILS
49090	STARLITE (Lightweight — Lead Free)
61090	COST CRUNCHER (Traditional Weight — Contains Lead)



SUPER BELT

The Super Belt has numerous features, including a felt lining for comfort and a tear-resistant nylon exterior. A "pulley" system cinches the belt for a secure fit.
NO COLOR CHOICE.

PRODUCT #	SIZE	FITS WAIST SIZE
60122	small	25" - 30"
60148	medium	30" - 35"
60137	large	35" - 40"
60155	x-large	40" - 45"
60170	xx-large	45" - 50"



REPLACEMENT WIDE BELT

Replacement belt for the Wide Belt, Comfort Wrap and Wide Belt Wrap Around aprons.

PRODUCT #	DETAILS
67892	Specify Small (30" - 38"), Medium (38" - 46") or Large (46" - 56")

DENTAL APRON

Dental Apron with permanently sewn on thyroid collar. 23" W x 27"L. 0.30mm protection. [AVAILABLE IN ALL FABRIC COLORS.](#)

PRODUCT #	DETAILS
40082	STARLITE (Lightweight — Lead Free)
60071	COST CRUNCHER (Traditional Weight — Contains Lead)



PATIENT APRON

Half aprons with easy on/off velcro closure that fastens securely. Available in all colors. 0.50mm protection. [AVAILABLE IN ALL FABRIC COLORS.](#)

LENGTH	WIDTH	PRESTIGE	STARLITE	TRUELITE	COST CRUNCHER
12"	24"	56928	46928	66928	60928
18"	24"	56929	46929	66929	60929
24"	24"	56924	46924	66924	60924



DEMI APRONS & RACK

Flexible vinyl covered spring steel belt - no ties or velcro to adjust. Available individually or as a set of 4 with or without rack. 0.50mm lead equivalent. [AVAILABLE IN ALL FABRIC COLORS.](#)

SIZE	LENGTH	WIDTH	PRESTIGE	STARLITE	TRUELITE	COST CRUNCHER
small	10"	8 1/2"	56036	46036	66036	60036
medium	12"	12"	56037	46037	66037	60037
large	14"	16"	56038	46038	66038	60038
x-large	16"	20"	56039	46039	66039	60039
set of 4 with rack			56067	46067	66067	60067
set of 4 without rack			56068	46068	66068	60068
rack only (12 lbs.)			60066	60066	60066	60066

- FOR VELCRO CLOSURE, ADD **V** AFTER PRODUCT NUMBER
- FOR BUCKLE CLOSURE, ADD **B** AFTER PRODUCT NUMBER



DEMI APRON SET WITH VELCRO CLOSURE

Also available in a set of three, one each of small (10" x 8 1/2"), large (14" x 16") and x-large (16" x 20"). All with velcro closure. 0.50mm lead equivalent. [AVAILABLE IN ALL FABRIC COLORS.](#)

PRODUCT #	DETAILS
56046	PRESTIGE (Lightest Weight — Lead Free)
46046	STARLITE (Lightweight — Lead Free)
66046	TRUELITE (Lightweight — Contains Lead)
61046	COST CRUNCHER (Traditional Weight — Contains Lead)





SCOLIOSIS STOLE

Panels provide breast and lung protection without compromising spinal image quality. 0.50mm lead equivalent. [AVAILABLE IN ALL FABRIC COLORS.](#)

PRODUCT #	DETAILS
46930	STARLITE (Lightweight — Lead Free)
60930	COST CRUNCHER (Traditional Weight — Contains Lead)



ADULT BREAST SHIELDS

Alternative to the scoliosis stole. Velcro neck strap allows for various placement of the shields. Four sizes of shields in each set. 0.50mm lead equivalent. [AVAILABLE IN ALL FABRIC COLORS.](#)

PRODUCT #	DETAILS
48321	STARLITE (Lightweight — Lead Free)
63321	COST CRUNCHER (Traditional Weight — Contains Lead)



TRIANGULAR GONAD SHIELD

9" triangular style with ties. 0.50mm lead equivalent. [AVAILABLE IN ALL FABRIC COLORS.](#)

PRODUCT #	DETAILS
46923	STARLITE (Lightweight — Lead Free)
63923	COST CRUNCHER (Traditional Weight — Contains Lead)



OVAL GONAD SHIELD SET

3 piece, 0.50mm lead equivalent protection with velcro hook-and-loop belt for attachment. Wall hanger included. Velcro strip wall hanger attaches to wall by hook, nail or screw. Gonad shields attach to hanger by velcro.

[AVAILABLE IN ALL FABRIC COLORS.](#)

PRODUCT #	DETAILS
46950	STARLITE (Lightweight — Lead Free)
65950	COST CRUNCHER (Traditional Weight — Contains Lead)

PEDIATRIC PATIENT ACCESSORIES

phone 800-359-6115 | fax 717-359-9109 | web www.bar-ray.com

PEDIATRIC BREAST SHIELDS

Perfect for pediatric spinal exams. It's a smaller alternative to the scoliosis stole that may be too large for children. Velcro neck strap allows for various placement of the shields. Three sizes of shields in each set. 0.50mm lead equivalent.

AVAILABLE ONLY AS SHOWN.

PRODUCT #	DETAILS
46970	Lead Free Lightweight



PEDIATRIC DIAPERS

0.50mm lead equivalent. One set of 6 diapers includes sizes 1-6.

AVAILABLE ONLY AS SHOWN.

PRODUCT #	DETAILS
42851	Lead Free Lightweight



PEDIATRIC GONAD SHIELDS

0.50mm lead equivalent. One set of 4 includes sizes small, medium, large and extra large. AVAILABLE ONLY AS SHOWN.

PRODUCT #	DETAILS
49745	Lead Free Lightweight

PEDIATRIC THYROID COLLAR

0.50mm lead equivalent. One set of 3 includes sizes small, medium and large. AVAILABLE ONLY AS SHOWN.

PRODUCT #	DETAILS
43645	Lead Free Lightweight



PEDIATRIC MITTENS

Offers full wraparound protection while positioning pediatric patients. Features velcro wrist strap and a soft non-slip material on palm. 0.50mm lead equivalent.

AVAILABLE ONLY AS SHOWN.

PRODUCT #	DETAILS
46458	Lead Free Lightweight





GLOVES

One piece molded design with a soft urethane exterior. Covers remove easily to inspect the protective qualities of the leaded core. All models feature a breathable nylon liner for comfort. Navy blue vinyl. 0.50mm protection. Latex free.

PRODUCT #	SIZE	DETAILS	WEIGHT
69303	15"	Pair	6 lbs.
69304	15"	Left Only	3 lbs.
69305	15"	Right Only	3 lbs.

MOLDED GLOVES

Seamless lead vinyl gloves available in three sizes, all 15" in length. These gloves have no liner or cover, but are an economical choice. Completely washable — can be rinsed inside and out. 0.50mm lead equivalent. Latex free.

PRODUCT #	SIZE	DETAILS	WEIGHT
69360	Large	Size 9	6 lbs.
69359	Medium	Size 8	6 lbs.
69358	Small	Size 7	6 lbs.

RADIATION ATTENUATING SURGICAL GLOVES

Offer the best protection with the greatest dexterity, sensitivity and comfort. Ideal for all high exposure procedures. May be sterilized with ethylene oxide or Sterrad® up to three times before disposal. This product contains natural rubber latex. Sizes 6-9 including 1/2 sizes. (no 9 1/2)

PRODUCT #	DETAILS
67100	0.300mm thickness (specify size)
67346	0.220mm thickness (specify size)
61796	0.600mm thickness (specify size)

Features

- Thin fingertips provide enhanced tactile sensitivity
- Soft powder-free finish creates a smooth interior which reduces skin irritation
- Anatomically correct curved fingers reduce hand fatigue
- Attenuates up to 30% more direct beam radiation than other leading products
- Available in 0.300mm (0.012") and 0.220mm (0.0088") fingertip thickness
- 12" length

ATTENUATION — RADIATION REDUCTION %

60 kVp	80 kVp	100 kVp	120 kVp	Thickness
43%	35%	26%	23%	0.088" - 0.220mm
55%	43%	35%	31%	0.012" - 0.300mm
81%	69%	62%	59%	0.024" - 0.600mm

ATTENUATING SLEEVES

When used in conjunction with the attenuating surgical gloves, these sleeves create a radiation protection barrier from fingers to biceps. Available in small, medium and large. This product contains natural rubber latex. Sold as a pair.

PRODUCT #	DETAILS
63359	0.30mm thickness (specify size)

BAR-RAY offers a variety of protective eyewear options to suit various needs of style, coverage, profession and budgets. Features such as head straps, prescription upgrades, side protection and chemical resistance ensures the proper eyewear for any situation.

All prescriptions require a pupillary distance or what's referred to as a "PD" measurement. It is needed to properly grind the prescription into the lens and no order can be started without it.

WRAP AROUND

The Wrap Around frame is constructed of extremely durable nylon that exhibits superior flexibility while minimizing potential breakage. The molded wrap feature provides maximum comfort. A full saddle bridge distributes weight evenly over the nose while providing excellent peripheral vision due to leaded glass side shields. 0.75mm Pb equivalent leaded glass. 95% attenuation up to 125 kVp.

PRODUCT #	DETAILS	WEIGHT
69650	Available in all Rx	84g.



Tortoise



Black



ASTRO-FLEX

A panoramic goggle constructed of impact-resistant propionate. The frame front has molded side shielding and is fitted to the brow for increased protection. The temple length and frame angle are adjustable for a uniform custom fit. 0.75mm Pb equivalent leaded glass.

PRODUCT #	DETAILS	WEIGHT
67852	Available in all Rx	93g.



FLAIR

Head-hugging temple design with excellent splash protection. Durable, high impact and chemical resistant. 0.75mm Pb equivalent leaded glass.

PRODUCT #	DETAILS	WEIGHT
62587	Available in all Rx	115g.

AVAILABLE IN THESE 2 COLORS:



Tortoise



Black



The lens of the eye, along with bone marrow, is highly sensitive to radiation. PSC cataracts form in the back of the lens, decreasing contrast sensitivity before affecting visual acuity. This differs from most forms of age-related cataracts, which interfere with visual acuity first.

Basil V. Worgul, PhD Columbia University College of Physicians & Surgeons

LATTICE



Durable molded nylon frame with flared saddle nose bridge for extra comfort. Temples have a lattice design. The Lattice frame is for large facial structures. 0.75mm Pb equivalent leaded glass.

PRODUCT #	DETAILS	WEIGHT
65879	Non-Rx Only	76g.

AVAILABLE IN THESE 2 COLORS:



Black



Brown

PLAID



Durable molded nylon with flared saddle nose bridge for extra comfort. Temples have a plaid design with solid color front frame. The Plaid frame is for medium-large facial structures. 0.75mm Pb equivalent leaded glass.

PRODUCT #	DETAILS	WEIGHT
62314	Non-Rx Only	70g.

AVAILABLE IN THESE 2 COLORS:



Silver



Brown

STAR



Durable molded nylon with flared saddle nose bridge for extra comfort. Solid white or black frame with a sleek and streamline style. The Star frame is for small to medium facial structures. 0.75mm Pb equivalent leaded glass.

PRODUCT #	DETAILS	WEIGHT
63998	Non-Rx Only	65g.

AVAILABLE IN THESE 2 COLORS:



White



Black

BETTY JANE



Durable molded nylon with flared saddle nose bridge for extra comfort. Betty Jane is black along the outside of the frames and white on the inside. The Betty Jane is for small facial structures. 0.75mm Pb equivalent leaded glass.

PRODUCT #	DETAILS	WEIGHT
64798	Non-Rx Only	59g.

AVAILABLE ONLY IN BLACK/WHITE AS SHOWN

ZEBRA

Durable molded nylon with flared saddle nose bridge for extra comfort. Temples have a zebra design with solid color front frame. The Zebra frame is for medium to large facial structures. 0.75mm Pb equivalent leaded glass.

PRODUCT #	DETAILS	WEIGHT
65587	Non-Rx Only	75g.

AVAILABLE IN THESE 2 COLORS:



Black



Brown



WILEY X AIRBORNE

One of the most popular frames, durable, comfortable and attractive. The frame has a removable facial cavity seal that keeps splashes, dust and debris from getting into your eyes. 0.75mm Pb equivalent leaded glass.

PRODUCT #	DETAILS	WEIGHT
61236	Available in limited Rx	69g.

AVAILABLE ONLY IN BLACK AS SHOWN



WILEY X P-17

The most popular Wiley X frame. The P-17 offers ample visibility and protection in a wrap around lens style. 0.75mm Pb equivalent leaded glass.

PRODUCT #	DETAILS	WEIGHT
69696	Available in limited Rx	61g.

AVAILABLE IN THESE 2 COLORS:



Tortoise



Black



WILEY X ZAK

Very popular, the Zak has wide wrap around lenses for great coverage and unimpeded vision. 0.75mm Pb equivalent leaded glass.

PRODUCT #	DETAILS	WEIGHT
65552	Available in limited Rx	76g.

AVAILABLE ONLY IN BLACK AS SHOWN



PROTECTIVE leaded eyewear is used by approximately 95% of the staff in Cath and EP labs. Usage is also increasing in urological procedures, interventional radiology, pain management and orthopedic surgery.*

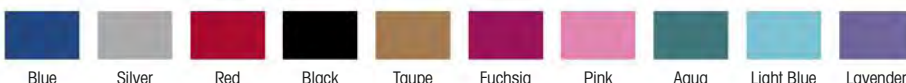
NANOLITE



A new, modern alternative to protective eyewear—now with new flex hinge and head strap! The anti-reflective coated lenses are extended, eliminating the need for side shields. They feature uni-soft flex temples. 95% attenuation up to 125 kVp. 0.75mm Pb equivalent leaded glass.
MORE SUITABLE FOR LARGER-FRAMED FACES.

PRODUCT #	DETAILS	WEIGHT
64937	Available in limited Rx	70.5g.

AVAILABLE IN THESE 10 COLORS:



ULTRALITE



A new design includes a soft rubber nose bridge for increased comfort, especially with high prescriptions. Also, now with new flex hinge and head strap! Non-prescription (plano) lenses automatically come with an anti-reflective coating. The UltraLite model comes with ultrasoft nose pads. 95% attenuation up to 125 kVp. 0.75mm Pb equivalent leaded glass.

PRODUCT #	DETAILS	WEIGHT
61478	Available in limited Rx	71g.

AVAILABLE IN THESE 4 COLORS:



ULTRA



The wrap around body utilizes a larger contoured lens, which eliminates the necessity for side shields. Ultrasoft flex-templates provide maximum comfort and fit. Non-prescription eyewear automatically comes with an anti-reflective coating—now with new flex hinge and head strap! 95% attenuation up to 125 kVp. 0.75mm Pb equivalent leaded glass.
MORE SUITABLE FOR SMALLER-FRAMED FACES.

PRODUCT #	DETAILS	WEIGHT
63864	Available in limited Rx	64g.

AVAILABLE IN THESE 3 COLORS:



Research shows that people are developing cataracts at much lower radiation doses than permissible limits allow.

Basil V. Worgul, PhD Columbia University College of Physicians & Surgeons

SINGLE Rx, BIFOCAL Rx, TRIFOCAL Rx, PROGRESSIVE Rx

All Prescriptions require a pupillary distance or what's referred to as a "PD" measurement. It is needed to properly grind the prescription into the lens and no order can be started without it.

ALUMA-LITE

Alumi-Lites feature durable lightweight aluminum frames. They have an adjustable nose pad bridge, adjustable silicon nose strap, non-slip rubber tips on temples, flexible spring hinge temples and anti-reflective coated lenses. 0.75mm Pb equivalent leaded glass.

PRODUCT #	DETAILS	WEIGHT
62831	Available in limited Rx	65g.

AVAILABLE IN THESE 5 COLORS:



WEB

An up-to-date, stylish design — very durable, high impact and chemical resistant. 0.75mm Pb equivalent leaded glass.

PRODUCT #	DETAILS	WEIGHT
67138	Available in limited Rx	115g.

AVAILABLE IN THESE 2 COLORS:



METALITE

Constructed of optical steel base metal with bronze electroplate. Comes with custom fitted 0.50mm leaded side shields that create a seal to the front lenses for necessary protection from oblique angle exposure. Includes adjustable non-slip silicon nose pads for maximum comfort. 0.75mm Pb equivalent leaded glass.

PRODUCT #	DETAILS	WEIGHT
62876	Available in all Rx – Bronze	65g.
64753	Available in all Rx – Gold	65g.



Interventional Radiology carries occupational risk for cataracts. Researchers found that the frequency and severity of PSC cataracts increased with age and years in practice.

Ziv J. Haskal, MD Columbia University College of Physicians & Surgeons

* The NCRP has established maximal permissible doses of radiation for persons who receive occupational exposure. The NRC suggests that occupational exposure be AS LOW AS REASONABLY ACHIEVABLE.

FITOVERS



Originally designed to fit over prescription eyewear, this oversized model is also an excellent choice for those requiring good splash protection. The large clear side shields protect the wearer from lateral exposure while eliminating the "tunnel" effects of look-alikes. 95% attenuation up to 125 kVp. 0.75mm Pb equivalent leaded glass.

PRODUCT #	DETAILS	WEIGHT
61456	Non-Rx Only	115g.

AVAILABLE IN THESE 2 COLORS:



Tortoise



Black



PANORAMA SHIELD — 400 SERIES

The Panorama Shield consists of a face formed radiation protective lead impregnated acrylic shield that is suspended from a dual adjustable headpiece. The acrylic shield can be positioned at any angle by side-adjustable dials. The headgear is adjustable in two positions. The circumference of the headband has an adjustable dial to increase or decrease the hat size for a comfortable, snug fit. Wipe clean with a soft cloth. Abrasive materials may scratch lens. Cannot be sterilized with high temperatures or high pressure.

PRODUCT #	DETAILS	WEIGHT	PROTECTION
68528	Non-Rx Only	350g. (12.3 oz.)	0.10mm



PANORAMA SHIELD — 450 SERIES

The Panorama Shield consists of a face formed radiation protective lead impregnated acrylic shield that is suspended from an adjustable headpiece. The stationary acrylic shield extends from a headpiece brow connector for 8" from top to bottom in front of the entire face. The circumference of the headband has an adjustable strap in the rear to increase or decrease the hat size for a comfortable, snug fit. Wipe clean with a soft cloth. Abrasive materials may scratch lens. Cannot be sterilized with high temperatures or high pressure.

PRODUCT #	DETAILS	WEIGHT	PROTECTION
69639	Non-Rx Only	395g. (14 oz.)	0.10mm

Visit our website www.bar-ray.com for all the up-to-date information on our products, as well as **NEW** products we may have.

PROTECTIVE LASER EYEWEAR

phone 800-359-6115 | fax 717-359-9109 | web www.bar-ray.com

Laser eyewear can protect eyes from the hazardous reflected or scattered high power laser light (radiation), class 3R, 3B & 4.

LASER EUROLITE

Large viewing area with side shields. See filter list below.

PRODUCT #	DETAILS	WEIGHT
65874	Non-Rx Only	65g.



LASER FRAME

Lightweight, comfortable fit with nylon frame with wrap design. Rubber nose pads. See filter list below.

PRODUCT #	DETAILS	WEIGHT
61732	Non-Rx Only	28g.



FILTER CHART

FILTERS	WAVELENGTH	OPTICAL DENSITY	COLOR	VISIBLE LIGHT TRANSMISSION	PART #	
AKG-5 Homium/Yag/Co2 Filter	900-1000nm	5+	Clear	Excellent Visibility	LS-KG5	■
	1000-1500nm	5+	Clear	Excellent Visibility	LS-KG5	■
	1500-2400nm	5+	Clear	Excellent Visibility	LS-KG5	■
	2900-10600nm	7+	Clear	Excellent Visibility	LS-KG5	■
Multiwave YAG, Alexandrite Diode	700-1200nm	7+	Light Blue	64%	LS-BG42	■
Argon KTP	190-532nm	5+	Orange	46.4%	LS-AKP	■ ■
	5000-11000nm	6+	Orange	46.4%	LS-AKP	■ ■
Co2/Excimer	190-370nm	5+	Clear	82%	LS-CD2	■ ■
	10600nm	6+	Clear	82%	LS-CD2	■ ■

■ Laser Eurolite

■ Laser Frame



SURFER

Smaller design to the Nanolite with 0.75mm Pb equivalent leaded glass.
Available in silver only.

PRODUCT #	DETAILS
67773	Non-Rx Only



WAHINE

The Wahine metal-framed protective eyewear features a stylish feminine design frame. 0.75mm Pb equivalent leaded glass.

PRODUCT #	DETAILS
61432	Non-Rx Only



MAUKA

The Mauka eyewear features a masculine-style metal frame. 0.75mm Pb equivalent leaded glass.

PRODUCT #	DETAILS
68765	Non-Rx Only



SUNRISE

Similar design to the Wrap Around featuring adjustable nose pads. 0.75mm Pb equivalent leaded glass and 0.50mm equivalent side shields.
Available in black/white, brown, grey, purple, blue and green tortoise.

PRODUCT #	DETAILS
67788	Non-Rx Only

BREEZE

Stylish narrow-framed protective eyewear. 0.75mm Pb equivalent leaded glass.

PRODUCT #	DETAILS
65021	Non-Rx Only

Non-Rx Only

AVAILABLE IN THESE 6 COLORS:



HALF FACE SHIELD

The Half Face Shield is similar in design to the Panorama Shield. It consists of a face formed radiation protective lead impregnated acrylic shield that is suspended from a dual adjustable headpiece. The acrylic shield can be positioned at any angle by side-adjustable dials. The headgear is adjustable in two positions. The circumference of the headband has an adjustable dial to increase or decrease the hat size for a comfortable, snug fit. Wipe clean with a soft cloth. Abrasive materials may scratch lenses. Cannot be sterilized with high temperatures or high pressure.

PRODUCT #	DETAILS	WEIGHT	PROTECTION
61826	Non-Rx Only	431g. (15.2oz.)	0.10mm



FULL FACE SHIELD

The Full Face Shield is similar in design to the Panorama Shield. It consists of a face formed radiation protective lead acrylic shield that is suspended from an adjustable headpiece. The stationary acrylic shield extends from a headpiece brow connector for 8", from top to bottom in front of the entire face. The circumference of the headband has an adjustable strap in the rear to increase or decrease the hat size for a comfortable, snug fit. Wipe clean with a soft cloth. Abrasive materials may scratch lens. Cannot be sterilized with high temperatures or high pressure.

PRODUCT #	DETAILS	WEIGHT	PROTECTION
67391	Non-Rx Only	499g. (17.6oz.)	0.10mm



VEST AND SKIRT MOBILE RACK

Conveniently stores up to 10 sets of vests and skirts.



PRODUCT #	DETAILS	DIMENSIONS	WEIGHT
63598	Vest and Skirt Mobile Rack	39"L x 26"W x 55"H	78 lbs.

MAXI RACK

New variation of mobile rack. Pivoting arms and locking casters. Holds 10 aprons. Some assembly required. Ships by motor freight.



PRODUCT #	DETAILS	DIMENSIONS	WEIGHT
61793	Maxi Rack	51"L x 24"W x 50"H	110 lbs.

VALET RACK

This valet holds up to 300 lbs. of aprons. It is constructed of sturdy painted metal and features wheels that can lock in place. Five hangers are included with each unit. Additional hangers can be purchased separately. Some assembly required.

PRODUCT #	DETAILS	DIMENSIONS	WEIGHT
69380	Apron Valet with 5 hangers	35"W x 54"H x 24"D	47 lbs.
69385	Additional hangers for the Apron Valet (set of 5)		5 lbs.



SPIDER RACK

Mobile storage for eight aprons on a five leg star-shape base with nylon casters. Available with glove holder. Some assembly required.

PRODUCT #	DETAILS	WEIGHT
60112	Spider Rack only	30 lbs.
60116	Spider Rack with glove holder	38 lbs.



PEG RACK

Quick and easy storage for 1 or 4 aprons. Manufactured of high tensile aluminum so our rack doesn't outweigh the aprons. Pegs are 4 3/4" long.

PRODUCT #	DETAILS	DIMENSIONS	WEIGHT
60073	1 apron	8"W x 3"H	6 lbs.
60081	4 apron	20"W x 3"H	12 lbs.

COMPACT RACK

Compact wall-hugging storage for two aprons and a pair of gloves. Some assembly required.

PRODUCT #	DETAILS	DIMENSIONS	WEIGHT
60098	Compact Rack	18"W x 19 1/2"H x 6 1/2"D	10 lbs.

DELUXE HANGER

Our chrome-plated steel hanger will hold the heaviest apron.

PRODUCT #	DETAILS	DIMENSIONS	WEIGHT
60999	Deluxe Hanger	18"W x 8"H	1 lb.

ECONOMY HANGER

Steel nickel plated hanger sturdy enough for any apron.

PRODUCT #	DETAILS	DIMENSIONS	WEIGHT
69748	Economy Hanger	21"W x 9 1/2"H	1 lb.



APRON RACKS

Installation hardware not included.

phone 800-359-6115 | fax 717-359-9109 | web www.bar-ray.com

APRON RACK

Designed to hold one apron and a pair of gloves in a minimum amount of space. Ideal for Surgical Drop-Off apron, which should be draped for storage. Some assembly required.

PRODUCT #	DETAILS	DIMENSIONS	WEIGHT
60195	Apron Rack	27"W x 7"H x 7 1/2"D	8 lbs.



TUBULAR RACK

Designed to hold an apron and a pair of gloves. Heavy duty painted steel construction will provide many years of use. Some assembly required.

PRODUCT #	DETAILS	DIMENSIONS	WEIGHT
60065	Tubular Rack	27 1/2"W x 16"H x 9 1/2"D	7 lbs.



FIVE APRON RACK

Arms fold flush against the wall and are available in right-and-left folding models. Dimensions folded - 28"W x 4 1/8"D, arms 90° to wall - 26"D, overall height 9". Arm length- 27 1/2".

PRODUCT #	DETAILS	WEIGHT
66685	Left	15 lbs.
66690	Right	15 lbs.



APRON BAG

This barrel-style nylon bag allows you to easily transport your protective apron from one location to another. It can also provide storage when the apron is not in use. Constructed of heavy duty nylon with a cardboard tube to roll your apron around for easy insertion into the bag. An adjustable shoulder strap and two handles make it easy to carry.

PRODUCT #	DETAILS	DIMENSIONS	WEIGHT
67539	Apron Bag	28"L x 8" Diameter	2 lbs.



ILLUMINATED SIGNS

Highly visible signs help prevent unnecessary exposure to staff and patients.



PRODUCT #	DETAILS	DIMENSIONS	WEIGHT
69843	X-Ray In Use	10 1/2"W x 7 1/2"H x 2"D	5 lbs.
69844	Darkroom In Use	10 1/2"W x 7 1/2"H x 2"D	5 lbs.
69845	CT In Use	10 1/2"W x 7 1/2"H x 2"D	5 lbs.
69846	MRI In Use	10 1/2"W x 7 1/2"H x 2"D	5 lbs.



PREGNANCY WARNING SIGNS

These signs give important information to patients. Double-faced tape is attached to each sign for easy mounting.



PRODUCT #	DETAILS	DIMENSIONS	WEIGHT
61285	English	10"W x 8"H	1 lb.
61954	Spanish	10"W x 8"H	1 lb.
61341	Combined	10"W x 8"H	1 lb.



RADIATION WARNING SIGN

Brightly colored mylar sign with adhesive backing.

PRODUCT #	DETAILS	DIMENSIONS	WEIGHT
60966	Caution	7"W x 9 1/2"H	1 lb.

BRITE SPOT

Features metal housing, bulb, rheostat foot switch, interior reflector and fixed iris.

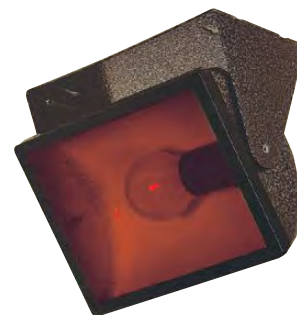
PRODUCT #	DETAILS	WEIGHT
69495	110V	8 lbs.



SAFELITE

Floods darkroom with safe, workable light. Can be used on tabletop, mounted on wall or hung from ceiling. Complete with 7.5W bulb, 6' cord, on/off switch and red filter.

PRODUCT #	DIMENSIONS	WEIGHT
69645	10" x 12"	5 lbs.
69648	5" x 7"	4 lbs.



OMNI-DIRECTIONAL

Unique design emits safe light in all directions. Includes 7.5W bulb, on/off line switch and red filter.

PRODUCT #	DIMENSIONS	WEIGHT
69875	5" x 7"	5 lbs.



SCREW-IN SAFELITE

Parabolic shape with red filter for even illumination. Requires 7.5W bulb (not included).

PRODUCT #	WEIGHT
65825	3 lbs.



ID PRINTER

AUTOMATIC — One-time exposure adjustment to suit processing variations. Will supply sharp images of patient information from ID card. Glow light indicates exposure is being made. Easy adjustment for Kodak-type window cassette ID card. (Cards not included)

PRODUCT #	DETAILS	DIMENSIONS	WEIGHT
65280	110V	8 3/4" x 8 3/4" x 2 1/2"H	5 lbs.



MOBILE CASSETTE HOLDER

The all-metal Mobile Cassette Holder is used to hold cassettes/grids/CR-Plates (8" x 10" to 14" x 17") during mobile procedures. Unit stands on a sturdy three-leg base with swivel locking wheels. Finish is putty enamel. Measures 46" tall with a 16" height adjustment, maximum height 46".

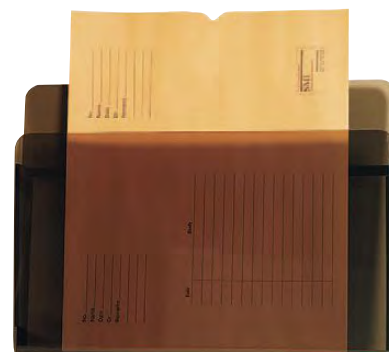
PRODUCT #	DETAILS	WEIGHT
62856	Mobile Cassette Holder with L/R Tilt	58 lbs.
69294	Mobile Cassette Holder with L/R & Up/Down Tilt	58 lbs.



CHART & FILM HOLDER

Smoked plexiglas film holder. Wipes clean with a soft, damp cloth. Screw holes are provided for easy mounting. Inside dimension is 15" x 18".

PRODUCT #	DETAILS	DIMENSIONS	WEIGHT
69100	Chart & Film Holder	19"W x 15 1/2"H x 2"D	8 lbs.



FILM RACK

Wall-mounted steel units will accommodate film caddies, film jackets and cassettes. Smoked plexiglas front panels. Openings are 22"W x 14"H x 5"D.

PRODUCT #	SIZE	DIMENSIONS	WEIGHT
64845	Double	22 1/4"W x 39 1/4"H x 5 1/4"D	35 lbs.



ECONOTANK®

Constructed of type 316 stainless steel, this system may be configured in different ways to suit individual requirements. Standpipe drain system allows continuous water flow during processing to maintain solution temperature, provide more complete washing, as well as easy draining when changing solutions. Plastic plumbing connections prevent rust.

PRODUCT #	DETAILS	DIMENSIONS	WEIGHT
60600	Includes two 5-gallon inserts, plumbing and stand	20 1/4"W x 36"H x 16 1/2"D	63 lbs.

OPTIONS

Covers reduce evaporation and fumes.

PRODUCT #	DETAILS	WEIGHT
62101	5-gallon insert cover	2 lbs.
60279	Flush cover	5 lbs.





EAR PLUGS

Box of 200 individually packaged pairs. Perfect for MRI.

PRODUCT #	WEIGHT
66430	2 lbs.



CAVI WIPES

CaviCide® is a convenient, ready-to-use, intermediate-level disinfectant which is effective against TB, HBV, viruses (hydrophilic and lipophilic), bacteria (including MRSA and VRE) and fungi. CaviCide® is safe for use on aprons and any non-porous surface.

PRODUCT #	DETAILS	WEIGHT
68123	160 per container	2 lbs.
65423	Wall Rack	3 lbs.



PATIENT CALIPER

Made of lightweight aluminum with adjustment slide. Scale reads in both inches and CM.

PRODUCT #	WEIGHT
67046	2 lbs.

LEADX® LEAD BLOCKERS

Durable, flexible 0.50mm lead vinyl.



PRODUCT #	SIZE	WEIGHT
60618	4" x 10"	0.5 lb.
60619	5" x 8"	0.4 lb.
60620	5" x 12"	0.6 lb.
60622	5 1/2" x 14"	0.8 lb.
60621	6" x 10"	0.8 lb.
60623	7" x 11"	0.8 lb.
60624	7" x 17"	1.3 lb.
60625	8 1/2" x 14"	1.3 lb.

ARM SUPPORT

This unique device slips under mattress and patient to hold his/her arms along side while in a prone or supine position. Excellent for use during specials, catheterization and nuclear medicine studies. Clear plastic provides a view of the patient at all times and eliminates the use of adhesive tape, sand bags or straps that obstruct access to the patient. Sold in pairs.

PRODUCT #	DETAILS	DIMENSIONS	WEIGHT
69210	1 PAIR	11 3/4" L X 12" W	4 lbs.



F-SPOON

The F-Spoon is a hand-held, lever-action, radiolucent device used by a radiologist during supine abdominal fluoroscopy to displace bowel loops from one another and to better visualize tumors, ulcers and other abnormalities of the gastrointestinal tract.

PRODUCT #	DIMENSIONS	WEIGHT
62487	16 3/4" L x 6 1/2" W.	3 lbs.



PNEUMATIC COMPRESSION PADDLE

The pneumatic compression paddle is used for guided compression during radiographic studies of the gastrointestinal tract. The paddle is inflated beneath the patient to increase pressure in a concentrated area. The paddle is made of acrylic. The imbedded metal ring provides quick fluoroscopic localization. Replacement parts and a wall hanger are available.

PRODUCT #	DETAILS	WEIGHT
5000	Pneumatic Compression Paddle	2 lbs.
5001	Replacement Bladder — Latex	1 lb.
5002	Replacement Air Inflation Bulb	1 lb.
5004	Wall Hanger Only	1 lb.





GRABBER SYSTEM

Our grabber brackets will fit any table. They are made of stainless steel and will accommodate any of our 5" wide straps. They are easy to use, quick on and off. Includes the unibody strap and a pair of grabber brackets. Radiolucent.

PRODUCT #	DETAILS	WEIGHT
7015	Grabber System	2 lbs.
7005	Grabber Brackets only — 1 pair	1 lb.



MULTI-STRAP

Multi-strap is a velcro strap that has the soft side of velcro and the hook side of velcro affixed back to back. It is as strong as tape, but soft to the skin. It is also reusable, radiolucent and easily applied. It can be cut to any length.

PRODUCT #	DETAILS	WEIGHT
6023	Multi-Strap 30' roll x 3" W	1.5 lbs.



IVP URETER COMPRESSION DEVICE

The ureteral compression device is used in excretory urography. The belt fits around the waist of the patient so that he may be repositioned quickly for studies at any angle. The belt is 65"L and the plastic plate is sewn into the belt for easy handling.

PRODUCT #	DETAILS	WEIGHT
5005	Ureteral Compression Device	2 lbs.

REPLACEMENT PARTS

PRODUCT #	DETAILS	WEIGHT
5002	Air Inflation Bulb — Latex	1 lb.
5013	Balloons with covers, 1 pair (includes tubing to the connector)	1 lb.

**SHORT****SLIM****STANDARD****X-LARGE**

TRANSFER BOARDS

This radiolucent transfer board promotes safe and easy patient transfers. The slippery surface permits easy placement under the patient. With minimal help, you can transfer the patient from bed to gurney to x-ray table. Leave the unit under the patient during the exam. Can be used in radiology, MRI or CT. Not anti-static. Wrist straps included.

PRODUCT #	DETAILS	DIMENSIONS	WEIGHT
68642	Short	22"W x 32"L x 3/16" thick	4.5 lbs.
67546	Slim	18"W x 72"L x 3/16" thick	8 lbs.
60182	Standard	22"W x 72"L x 3/16" thick	10 lbs.
63582	X-Large	32"W x 72"L x 1/4" thick	19 lbs.
65190	Wall storage bracket	8"W x 3"H	6 lbs.

LEADX® LEAD VINYL



LeadX® is a flexible protective material available in three lead equivalents for use where radiation protection is desired or for adding protection. Smooth, non-absorbent vinyl surface is easily cleaned.

PRODUCT #	0.25MM BLACK	PRODUCT #	0.50MM GREY	PRODUCT #	1.0MM CREAM
60019	24" x 24"	60003	24" x 24"	60111	24" x 24"
60055	24" x 36"	60851	24" x 36"	61640	24" x 36"
60152	24" x 48"	60017	24" x 48"	60180	24" x 48"
60300	36" x 48"	60915	36" x 48"	62270	36" x 48"
60515	48" x 48"	60072	48" x 48"	60595	48" x 48"
60606	larger	60967	larger	61111	larger
61597	prep charge	61597	prep charge	61597	prep charge

LEADX® LEAD VINYL CURTAINS



Ideal for areas where secondary or low-level radiation is present, yet access is required. Complete with track and trolleys. Installation hardware not included.

DOORWAY CURTAINS

PRODUCT #	DETAILS	DIMENSIONS
62307	0.50mm - Grey	Up to 2' x 7'
68218	0.50mm - Grey	Up to 4' x 7'
64251	1.00mm - Cream	Up to 2' x 7'
67444	1.00mm - Cream	Up to 4' x 7'

ROOM DIVIDER CURTAINS

PRODUCT #	DETAILS
61938	0.50mm; 1/16" thick, 1 1/2 lb./ft. - Grey
61939	1.00mm; 1/8" thick, 3 lb./ft. - Cream
61597	Prep charge per curtain

PROTECTIVE BLANKETS

Nylon-covered 0.50mm equivalent protective blanket may be used for shielding patients or equipment. **AVAILABLE IN ALL FABRIC COLORS. ALSO AVAILABLE WITH YOUR HOSPITAL LOGO.**

PRESTIGE Highest Weight Lead Free	STARLITE Lightweight Lead Free	TRUELITE Lightweight Contains Lead	COST CRUNCHER Traditional Weight Contains Lead	DETAILS
54963	44100	64100	60020	24" x 24"
52314	44202	64202	60109	24" x 36"
57463	44515	64515	60220	24" x 48"



PORTA SHIELD

Similar to Adjustable Mobile Shield, this shield adjusts from 24" to 48" in height. Frame features preset holes to easily adjust to a level height. Ships oversized. AVAILABLE IN ALL FABRIC COLORS. ALSO AVAILABLE WITH YOUR HOSPITAL LOGO.

PRODUCT #	DETAILS	WEIGHT
61743	0.50mm	40 lbs.
65289	0.75mm	42 lbs.
64796	1.00mm	45 lbs.



ADJUSTABLE MOBILE SHIELD

Excellent for patient protection during diagnostic procedures such as erect chest and cervical spine. Includes a durable nylon-covered 0.50mm shield. Height adjustable 36" - 60". Rolls on a sturdy star-leg base for extra stability and easy movement. AVAILABLE IN ALL FABRIC COLORS. ALSO AVAILABLE WITH YOUR HOSPITAL LOGO.

PRODUCT #	DIMENSIONS	WEIGHT
62531	24" x 24"	25 lbs.
62532	24" x 36"	30 lbs.
62533	24" x 48"	35 lbs.
62535	24" x 28" Split Shield	37 lbs.



REPLACEMENT SHIELDS

Replacement shields now available. Contact us for a quote. AVAILABLE IN ALL FABRIC COLORS. ALSO AVAILABLE WITH YOUR HOSPITAL LOGO.



TABLE DRAPES



The table drape is designed to securely fit any style table using velcro. The panels protect the staff against radiation scatter to the lower extremities. Specify single-sided or double-sided when ordering. For double-sided drapes, please specify table width. **AVAILABLE IN ALL FABRIC COLORS.**
ALSO AVAILABLE WITH YOUR HOSPITAL LOGO.

PRODUCT #	DIMENSIONS — W x L	WEIGHT
61359	Single-Sided 48" x 24"	48 lbs.
63482	Single-Sided 48" x 28"	58 lbs.
65632	Single-Sided 48" x 36"	72 lbs.
67748	Single-Sided 36" x 24"	36 lbs.
69147	Single-Sided 36" x 28"	43 lbs.
62998	Single-Sided 36" x 36"	54 lbs.
62798	Double-Sided 48" x 24"	96 lbs.
64184	Double-Sided 48" x 28"	115 lbs.
66221	Double-Sided 48" x 36"	144 lbs.
68954	Double-Sided 36" x 24"	72 lbs.
61245	Double-Sided 36" x 28"	86 lbs.
63145	Double-Sided 36" x 36"	108 lbs.

PATIENT WRAP



Our original design of the patient wrap will help in CT studies to protect the patient from unnecessary radiation exposure. The 30" x 60" shield goes under and around the patient, enveloping him/her in a 0.50mm Pb equivalent wrap. The convenient velcro and strap fasteners enable easy closure around the patient. A must for every CT department. **AVAILABLE IN ALL FABRIC COLORS.**
ALSO AVAILABLE WITH YOUR HOSPITAL LOGO.

PRODUCT #	DETAILS
58796	PRESTIGE (Lightest Weight — Lead Free)
44585	STARLITE (Lightweight — Lead Free)
65545	TRUELITE (Lightweight — Contains Lead)
63325	COST CRUNCHER (Traditional Weight — Contains Lead)



604-CEN-68CM



6096-Lamp-HC



303-T3.0C

CEILING SHIELDS

60 x 80cm ceiling-mounted radiation shield with center mount ball and socket joint. This design allows the 0.5mm Pb. lead acrylic window to be rotated and tilted at its pivot point for the optimum placement between patient and physician. The shield is supplied with a ceiling column that can accommodate an optional surgical lamp. Track and carriage are sold separately.

PRODUCT #	DETAILS
604-CEN-68CM	Ceiling-mounted radiation shield. Column included
6096-Lamp-HC	Surgical lamp to mount to radiation shield. Column not included
303-T3.0C	3.0 meter-long ceiling track and carriage system only
303-T25C	2.5 meter-long ceiling track and carriage system only
303-T2C	2.0 meter-long ceiling track and carriage system only

MOBILE BARRIER

1.5mm protection throughout. Beige vinyl covering. Lead glass window factory installed.

PRODUCT #	DETAILS
63585 <small>SHOWN</small>	Mobile Barrier 24" x 75" with 8" x 10" Glass
64101	Mobile Barrier 24" x 84" with 8" x 10" Glass
67514	Mobile Barrier 30" x 75" with 8" x 10" Glass
61101	Mobile Barrier 30" x 84" with 8" x 10" Glass
64111	Mobile Barrier 24" x 75" with 10" x 12" Glass
68951	Mobile Barrier 24" x 84" with 10" x 12" Glass
62254	Mobile Barrier 30" x 75" with 10" x 12" Glass
61844	Mobile Barrier 30" x 84" with 10" x 12" Glass
65564	Mobile Barrier 36" x 75" with 10" x 12" Glass
66101	Mobile Barrier 36" x 84" with 10" x 12" Glass
64445	Mobile Barrier 24" x 75" with 12" x 16" Glass
68862	Mobile Barrier 24" x 84" with 12" x 16" Glass
61873	Mobile Barrier 30" x 75" with 12" x 16" Glass
66881	Mobile Barrier 30" x 84" with 12" x 16" Glass
61119	Mobile Barrier 36" x 75" with 12" x 16" Glass
68787	Mobile Barrier 36" x 84" with 12" x 16" Glass
65511 *	Mobile Barrier 30" x 75" with 18" x 24" Glass
61103 *	Mobile Barrier 30" x 84" with 18" x 24" Glass
69857 *	Mobile Barrier 36" x 75" with 18" x 24" Glass
66102 *	Mobile Barrier 36" x 84" with 18" x 24" Glass
67785 *	Mobile Barrier 36" x 75" with 24" x 18" Glass
62229 *	Mobile Barrier 36" x 84" with 24" x 18" Glass
65871 *	Mobile Barrier 36" x 75" with 24" x 24" Glass
66103 *	Mobile Barrier 36" x 84" with 24" x 24" Glass
63481 *	Mobile Barrier 42" x 75" with 24" x 24" Glass
62573 *	Mobile Barrier 42" x 84" with 24" x 24" Glass
61148 *	Mobile Barrier 42" x 75" with 30" x 24" Glass
67474 *	Mobile Barrier 42" x 84" with 30" x 24" Glass
65558 *	Mobile Barrier 36" x 75" with 24" x 36" Glass
66104 *	Mobile Barrier 36" x 84" with 24" x 36" Glass
69584 *	Mobile Barrier 48" x 75" with 36" x 24" Glass
68114 *	Mobile Barrier 48" x 84" with 36" x 24" Glass
63257 *	Mobile Barrier 48" x 75" with 36" x 36" Glass
67777 *	Mobile Barrier 48" x 84" with 36" x 36" Glass
63929 * <small>SHOWN</small>	Mobile Barrier 48" x 84" with 36" x 48" Glass

Dimensions shown are width first.

* Large size glass window section shipped separately from barrier for field assembly.

All Mobile Barriers are shipped via motor freight.

LEADED GLASS

1.9mm lead protective glass is light amber color and mirror polished. Actual glass thickness 5/16"

PRODUCT #	DIMENSIONS
69120	8" x 10" ***
60121	10" x 12" ***
61121	12" x 12" ***
60120	12" x 16" ***
65121 **	14" x 18" ***
64120 **	18" x 24"
67120 **	24" x 24"
68120 **	24" x 30"
68121 **	24" x 36"
67121 **	24" x 48"
69121 **	32" x 40"
64123 **	36" x 36"
61123 **	36" x 48"
63123 **	36" x 60"
65122 **	36" x 72"
65123 **	36" x 84"
66123 **	36" x 96"
60119 **	48" x 48"
66122 **	48" x 60"
60133 **	48" x 72"
60134 **	48" x 84"
60139 **	48" x 96"

**** NOTE: 69620 CRATING CHARGE APPLIES**



FedEx



VETERINARIAN APRON

Features a smooth surface that minimizes damage caused by animal claws. Durable yet soft 1" straps cross the back and tie securely in front, providing a snug and comfortable fit. Velcro shoulder strap prevents slippage. One size, 24" x 36" AVAILABLE ONLY AS SHOWN.

0.50MM PROTECTION

60895K COST CRUNCHER (Traditional Weight — Contains Lead)



PET TRANSPORTER

This transporter provides a safe and secure way to move your patient easily. It consists of fiberglass poles with rubber hand grips, stain-resistant nylon that is reinforced with 2" webbing and adjustable buckles to secure your patient. When not in use, it can be rolled up or hung for convenient storage. EXCELLENT FOR EMERGENCY SERVICES.

AVAILABLE IN THESE 2 COLORS:



Royal Blue



Neon Green

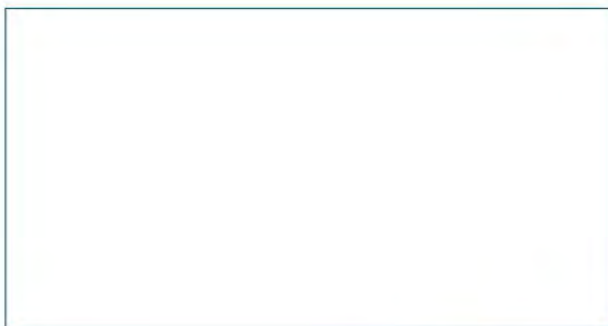
PRODUCT #	DETAILS	WEIGHT
68480	60" with a 30" x 49" carrying area	13 lbs.



VET MITTENS

Unlike palm shields, our design gives full wraparound 0.50mm protection while positioning animals during procedures. Velcro wrist strap and now with non-slip material on palm to prevent slippage while securing animal. AVAILABLE ONLY AS SHOWN.

PRODUCT #	DETAILS	WEIGHT
69550	0.50mm pair	4 lbs.



mail 95 monarch street • littlestown, pa 17340, usa
toll free 800-359-6115 • phone 717-359-9100
fax 717-359-9109 • web www.bar-ray.com
email info4barray@bar-ray.com

Bar-Ray, LeadX and Econotank are registered trademarks of Bar-Ray Products, Inc.

Management Systems Registered to ISO 9001:2008

CE Marking Pending

©Bar-Ray Products 2011

